

Traffic Incident Management Notification & Agency Resource Guide



Collier – Lee – Charlotte Traffic Incident Management Team



June 2011



TRAFFIC INCIDENT MANAGEMENT

Notification and Agency Resource Guide

Prepared for:

**Collier-Lee-Charlotte
Traffic Incident Management Team**

Sponsored by:

**Florida Department of Transportation – District 1
Contract C-8U91
FM No 417470 1 32 02**

Current Edition Prepared by:

Delcan Corporation

June 2011

Originally Developed by:

PB Farradyne

June 2005

A firm, vendor, or agency's absence or presence does not imply prejudice or impropriety; FDOT, Delcan, and PB Farradyne do not endorse any contractor or service provider. Each agency is encouraged to add additional qualified contacts to their lists.

TABLE OF CONTENTS

Section 1

Introduction
Incident Levels
Open Roads Policy
TRAA Law Enforcement Vehicle Identification Guide

Section 2

Florida Department of Transportation
Florida Highway Patrol

Section 3

Fire Rescue & EMS

Section 4

Index & Listings
Contacts & Resources for Freeway Incidents

Section 5

Notifications by Traffic Impact Levels
Maps with Fire Rescue Response Areas on I-75



SECTION 1

Introduction

Incident Levels

Open Roads Policy

TRAA Law Enforcement Identification Guide



Collier-Lee-Charlotte Traffic Incident Management Team

Notification and Agency Resource Guide

INTRODUCTION

Purpose:

The purpose of this guidebook is to provide consistent relevant information for freeway incident response personnel to facilitate a safe, rapid and coordinated response and overall incident management. This guidebook serves as a reference for freeway incident response personnel, on-scene managers or commanders and in dispatch centers, operations centers or agency headquarters. It also could serve as a training guide for Traffic Incident Management Team personnel.

Background:

Once an incident has been detected, response depends on understanding the nature of the incident and the steps and or resources that are necessary to return the facility to normal conditions. These steps may entail, among other items, requesting assistance or services from other agencies or contractors, requesting special equipment and or personnel, and the deployment of special traffic management strategies, including motorist information.

As with early detection, the appropriate identification of needs at an incident significantly decreases the time required to clear it. However, unlike incident detection, proper identification of needs at an incident site is more a function of training and knowledge of the available response resources than a function of technology. Because incidents can be cleared with various techniques and pieces of equipment, persons or agencies that initially respond to an incident scene must have adequate training to select the best response. They must be able to judge the scope of the problem and know which local agencies and what resources are appropriate and available for responding to that specific incident at that time and at that location.

How to Use This Guide

The Notification and Resource Guide is organized into three major areas:

Sections 2 and 3 provide an overview of the multi-agency framework for freeway incident management. These sections provide comprehensive data on the organizations, vital contact information and available resources.

Section 4 provides incident responders, dispatchers, and managers/commanders with a directory of resources to quickly locate necessary services and contractors along with additional contacts with various agencies and organizations.

Section 5 includes individual jurisdiction maps for use by incident responders to quickly locate an incident and, using the information on the facing page, rapidly determine the established notification procedure for the impact level of an incident.

A firm, vendor, or agency's absence or presence does not imply prejudice or impropriety. FDOT and Delcan do not endorse any contractor or service provider. Each agency is encouraged to add additional qualified contacts to their lists.

Traffic Impact Levels

Criteria for Establishing Freeway Incident Levels Based on *Traffic Impact*

Level 1 (Minor):

Impact to the traveled roadway is estimated to be less than 30 minutes with no lane blockage or minor lane blockage.

Level 2 (Intermediate):

Impact to the traveled roadway is estimated to be 30 minutes to 2 hours with lane blockages, but not a full closure of the roadway.

Level 3 (Major):

Impact to the traveled roadway is estimated to be more than 2 hours or the roadway is fully closed in any single direction. Significant area-wide congestion is expected.

- ***Determination of Incident Level will be made under the discretion of the First Responding Agency or the Incident Commander based on incident scene assessment.***
- ***After determination of the Incident Level, the Incident Commander will notify their dispatch instructing them to make the agency notifications appropriate for the Incident Level.***

State of Florida

“OPEN ROADS POLICY”

Quick Clearance for Safety and Mobility

This agreement by and between the Florida Highway Patrol (FHP) and the Florida Department of Transportation (FDOT) establishes a policy for FHP and FDOT personnel to expedite the removal of vehicles, cargo, and debris from roadways on the State Highway System to restore, in an URGENT MANNER the safe and orderly flow of traffic following a motor vehicle crash or incident on Florida's roadways.

Whereas: Public safety is the highest priority and must be maintained especially when injuries or hazardous materials are involved. The quality of life in the State of Florida is heavily dependent upon the free movement of people, vehicles, and commerce. The FHP and FDOT share the responsibility for achieving and maintaining the degree of order necessary to make this free movement possible. Agencies have the responsibility to do whatever is reasonable to reduce the risk to responders, secondary crashes, and delays associated with incidents, crashes, roadway maintenance, construction, and enforcement activities.

The following operating standards are based on the philosophy that the State Highway System will not be closed or restricted any longer than is absolutely necessary.

Be it resolved: Roadways will be cleared of damaged vehicles, spilled cargo, and debris as soon as it is safe to do so. It is understood that damage to vehicles or cargo may occur as a result of clearing the roadway on an urgent basis. While reasonable attempts to avoid such damage shall be taken, the highest priority is restoring traffic to normal conditions. Incident caused congestion has an enormous cost to society.

Florida Highway Patrol Responsibilities

Members of FHP who respond to the scene of traffic incidents will make clearing the travel portion of the roadway a high priority. When an investigation is required, it will be conducted in as expedient a manner as possible considering the severity of the collision. Non-critical portions of the investigation may be delayed until lighter traffic conditions allow completion of those tasks. The FHP will close only those lanes absolutely necessary to safely conduct the investigation. The FHP will coordinate with FDOT representatives to set up appropriate traffic control, establish alternate routes, expedite the safe movement of traffic at the scene, and restore the roadway to normal conditions as soon as possible.

Whenever practical, damaged vehicles on access controlled roadways will be removed to off ramps, accident investigation sites, or other safe areas for completion of investigations to reduce the delays associated with motorists slowing to "gawk." Tow trucks will be requested as soon as it is evident that they will be needed to clear the roadway. FHP will assure that all authorized tow operators have met established competency levels and that the equipment is of appropriate size, capacity, and design to meet all standards of the State of Florida.

The FHP will not unnecessarily cause any delay in reopening all or part of a roadway to allow a company to dispatch its own equipment to off-load cargo or recover a vehicle or load that is impacting traffic during peak traffic hours or creating a hazard to the public. The FHP and FDOT will cooperate in planning and implementing clearance operations in the most safe and expeditious manner.

Florida Department of Transportations Responsibilities

When requested by FHP or other emergency agency, FDOT will respond and deploy resources to major traffic incidents 24 hours a day, 7 days per week. Each FDOT District will develop and implement response procedures to meet the goal of providing initial traffic control within **30 minutes** of notification during the assigned working hours of each maintenance yard, and **60 minutes** after hours.

The FDOT, in coordination with FHP, will upgrade traffic controls, determine detour routes, and discuss clearance strategies. When requested, FDOT will provide temporary traffic controls to ensure a safe work zone for all responders and the motoring public.

The FDOT, in cooperation with the FHP, will determine and deploy the necessary heavy equipment and manpower to reopen the roadway if there is a delay in clearing the travel lanes, or if the task is beyond the capabilities of the wrecker service on scene. If cargo or spilled loads [non-hazardous] are involved, FDOT will make every effort to assist in the relocation of the materials in the shortest possible time, using whatever equipment necessary. All such materials or any vehicles relocated by FDOT will be moved the minimum possible distance to eliminate traffic hazards.

FDOT personnel will document all hours and equipment used for traffic control, roadway clearance, and debris clean up. FDOT will place traffic control devices at the scene should any damaged vehicles or cargo remain on the shoulder adjacent to the travel lanes for removal at a later time.

The FDOT and FHP will continually work together to ensure that the needs of motorists on state roadways are being met in the most professional, safe, and efficient manner.

Therefore, it is agreed as follows:

The FHP and the FDOT will evaluate and continually update and modify their operating policies, procedures, rules, and standards to assure they are consistent with this **"OPEN ROADS POLICY"** agreement.

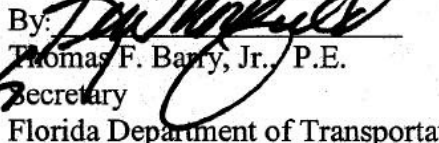
FHP, together with FDOT, will research, evaluate, and conduct training in the most advanced technologies, equipment, and approved methods for the documentation and investigation of crash or incident scenes. FHP, using these techniques, will prioritize the investigative tasks and reopen travel lanes upon completion of tasks that must be conducted, without the impediment of traffic flowing.

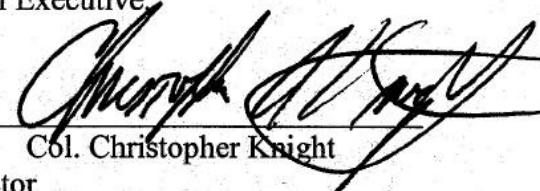
Roadways will be cleared as soon as possible. It is the goal of all agencies that **all incidents be cleared from the roadway within 90 minutes of the arrival of the first responding officer**. This goal being made with the understanding that more complex scenarios may require additional time for complete clearance.

It is further agreed that:

FHP and FDOT will actively solicit and enlist other state, county, and local agencies, political subdivisions, industry groups, and professional associations to endorse and become party to this **"OPEN ROADS PHILOSOPHY"** for the State of Florida.

In witness whereof, each party hereto has caused this document to be executed in its name and on its behalf by its duly authorized Chief Executive.


By: 
Thomas F. Barry, Jr., P.E.
Secretary
Florida Department of Transportation

By: 
Col. Christopher Knight
Director
Florida Highway Patrol

Date: 10/30/02

Date: 11-7-02

Reviewed By:


Agency's General Counsel Office


Agency's General Counsel Office

LAW ENFORCEMENT VEHICLE IDENTIFICATION GUIDE

CLASS 1 - LIGHT-DUTY

(6,000 lbs. or less GVWR - 4 tires)*



CLASS 2 - LIGHT-DUTY

(6,001 - 10,000 lbs. GVWR - 4 tires)*



Class 1 through 2 include passenger cars, light trucks and mini vans, full size pickups, sport utility vehicles, full size vans

CLASS 1 AND 2 - LIGHT-DUTY TOW

Gross Vehicle Weight Rating (6,000 to 10,000 lbs.)

Passenger cars, small SUVs and pickup trucks

- Year, make and model?
- Number of occupants?
- Full-size pickup or van?
- Is it loaded?
- 4x4 or AWD?
- Keys?
- Trailer?
- What is the load?

VEHICLES IN THESE CLASSES USUALLY HAVE FOUR TIRES.

CLASS 3 - LIGHT- OR MEDIUM-DUTY

(10,001 - 14,000 lbs. GVWR - 6 tires or more)*



CLASS 4 - MEDIUM-DUTY

(14,001 - 16,000 lbs. GVWR - 6 tires or more)*



CLASS 5 - MEDIUM-DUTY

(16,001 - 19,500 lbs. GVWR - 6 tires or more)*



CLASS 6 - MEDIUM-DUTY

(19,501 - 26,000 lbs. GVWR - 6 tires or more)*



Class 3 through 6 include a range of mid-sized to larger vehicles including delivery trucks, utility vehicles, motor homes, package parcel trucks, ambulances, small dump trucks, landscape vehicles, small flatbed and stake-type trucks, refrigerated and box trucks, small and medium-duty buses (school and local transit buses.)

CLASS 3, 4, 5 & 6 - LIGHT- OR MEDIUM-DUTY TOW

Gross Vehicle Weight Rating (10,001 up to 26,000 lbs.)

- Year, make and model?
- Body type – pickup truck, box truck, flatbed, step van
- What is the load and is it damaged?
- Pickup, van, shuttle bus or motor home?
- Number of occupants?
- Vehicle description is critical to determine the proper tow vehicle
- Keys?

VEHICLES IN THESE CLASSES USUALLY HAVE SIX TIRES.

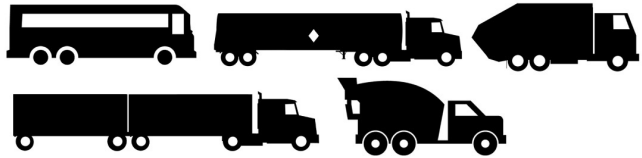
CLASS 7 - HEAVY-DUTY

(26,001 - 33,000 lbs. GVWR - 6 tires or more)*



CLASS 8 - HEAVY-DUTY

(33,001 lbs. and over GVWR - 10 tires or more)*



Class 7 and 8 includes a range of heavier vehicles including large delivery trucks, motor coaches, all tractor-trailer combinations, refuse trucks, construction vehicles, etc.

CLASS 7 AND 8 - HEAVY-DUTY TOW

Gross Vehicle Weight Rating

(Class 7 - 26,001 to 33,000 lbs.)

(Class 8 - 33,001 and up to state limit)

- Year, make and model?
- Bus or motor home?
- Number of occupants?
- Two or three axle truck or tractor-trailer?
- What is the load and is it damaged?
- Keys?

STRAIGHT TRUCKS, BUSES OR MOTOR HOMES IN THESE CLASSES WILL USUALLY HAVE SIX TO TEN TIRES. TRACTOR AND TRAILER COMBINATIONS WILL HAVE FOURTEEN OR MORE TIRES.

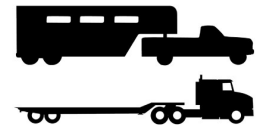
MOTORCYCLES - LIGHT-DUTY TOW

Sports motorcycle – off road/basic street type
Performance motorcycle – “racing” model type
Touring motorcycle – large, heavy road touring type
Custom or 3-wheel motorcycle



TRAILERS - LIGHT-, MEDIUM- OR HEAVY-DUTY TOW

- Is it a truck and trailer to tow or just a trailer to tow?
- Number of axles and what is it hauling or is it designed to haul?
- Type of load or weight of load?
- If a tow, does the trailer have a ball, pintle or a fifth wheel hitch?



MOTOR HOMES - LIGHT-, MEDIUM- OR HEAVY-DUTY TOW

Class C – usually built on a van or pickup type truck chassis

Class A – usually built on a medium to large truck or bus chassis



LOCATION:

All locations are considered to be on the right hand shoulder unless advised the incident is in a lane of travel, in the center divider or off the road. Locations should always be given so the tow truck can access the scene safely. Freeway locations should always be given going in one direction, such as southbound south of a specific landmark or intersection.

REASON FOR THE TOW: Service call, storage, wreck or recovery

Service call: Specify the reason, fuel, tire, etc.

Tow: Specify the reason

Storage: Arrest or impound tow

- Is the vehicle stripped, burned, flat tires or no wheels?

Wreck: Condition of the vehicle

- Is the vehicle/truck overturned?
- Are lanes blocked?
- Is the vehicle off the road?
- How far?
- Any special problems at the scene or special equipment needed?

11/13/22

This card is produced and distributed by the Towing and Recovery Association of America.

Copyright 2009 by ©TRAA

www.towserver.net • 800-728-0136



* Note: The Gross Vehicle Weight Rating (GVWR) of the vehicle to be towed or recovered can be found on the identification label on the vehicle's driver's side doorframe. The number of pounds listed on the label can then be compared with the DOT Classification Vehicle Type Chart for the correct DOT class.

SECTION 2

Florida Department of Transportation
Florida Highway Patrol



Florida Department of Transportation

District One

The Florida Department of Transportation (FDOT) District One Headquarters Office in Bartow manages and has operational responsibility for all state owned highways and freeways in Collier, Lee, Charlotte, Sarasota, Manatee, Okeechobee, Glades, Hendry, Highlands, Polk, DeSoto, and Hardee County Counties. The freeways include I-4, I-75, and I-275. Freeway maintenance is performed on I-75 and I-275 by the asset management contractors listed below.

District One, with a land area of nearly 12,000 square miles, represents a total of 12 counties in Southwestern Florida. Its 2.6 million residents contribute to the 34.7 million miles traveled daily on its state highways.

FDOT provides capital and operating assistance to four major transit authorities with 105 passenger vehicles in District One. In addition, there are 115 private airports, 19 public airports, four major rail lines, and one deep-water port in operation.

The District Secretary, Directors, Department Heads, administration and staff are located at the FDOT Headquarters Building at 801 N. Broadway Street, Bartow, Florida 33830-3809. Phone (863) 519-2300.

The Southwest Area Office is located at the SWIFT SunGuide Center, 10041 Daniels Parkway, Fort Myers, FL 33913. Phone (239) 461-4300, Fax (239) 338-2353.

Public Information Contact Numbers:

Bartow (for Sarasota and Manatee Counties)

Mon-Fri 8 a.m. – 5 p.m.
Cindy Clemmons or Lauren Hatchell
Phone: (863) 519-2362
FAX: (863) 534-7265
Toll Free from Southwest Florida 1-800-292-3368

Nights, Weekends and Holidays
Cindy Clemmons
Phone: (863) 640-1368

Southwest Florida (for Collier, Lee and Charlotte Counties)

Mon-Fri 8 a.m. – 5 p.m.
Debbie Tower or JoAnn May
Phone: (941) 461-4300
FAX: (941) 338-2353

Nights, Weekends and Holidays
Debbie Tower
Phone: (863) 608-3162

SWIFT SunGuide Center

The SWIFT SunGuide Regional Traffic Management Center is the hub of real-time operations on I-75 and the supporting arterial network throughout FDOT District One. The center's system relays information to the public through many components, allows the public to make efficient and timesaving transportation decisions, and serves as the base of regional traffic management, law enforcement, and incident management.

FDOT District One has constructed the SWIFT SunGuide Center and the associated ITS field devices to manage traffic flow on I-75. This is especially important when lane closing incidents, construction, recurring delays, and other events impact traffic flow. The SWIFT SunGuide Center provides the public with real-time information on current traffic conditions along I-75. The SWIFT SunGuide Center is connected with the Road Ranger service patrol program, the Advanced Traveler Information System (ATIS) 511 program, the various Traffic signal control systems throughout the district (which has several CCTV cameras strategically positioned to view some arterial roadways), the FDOT District One Public Information Office (PIO), the Florida Highway Patrol (FHP), the Collier-Lee-Charlotte TIM Team, and the Sarasota-Manatee TIM Team.

The SWIFT SunGuide Center operates and manages field devices, including closed circuit television (CCTV) cameras, dynamic message signs (DMS), vehicle detection systems (VDS), roadway weather information systems (RWIS), and the safety barrier cable system (SBCS). These devices are all controlled through the centralized SunGuide™ Computer System.

The SWIFT SunGuide Center currently covers approximately 123 miles of I-75 in Collier, Lee, and Charlotte Counties and is expanding to northward through Sarasota and Manatee Counties over the next several years.

SWIFT SunGuide Center Contact Numbers:

Control Room	(239) 225-9860 (not for distribution)
Main	(239) 225-9800
Main Fax	(239) 225-9871
Control Room Fax	(239) 225-9870
RTMC Manager	(239) 225-9802
RTMC Operations Manager	(239) 225-9802

Emergency Stopping Sites

Twelve emergency stopping sites (ESS) have been constructed at six interchanges between Exit 107 (Pine Ridge) and Exit 136 (Colonial) as part of the recent I-75 widening project. The ESSs are improved areas that are located on the state right-of-way near the freeway mainline. The ESSs are specifically designated and signed to provide a safe location for crash investigation, motorists with disabled or wrecked vehicles, law enforcement, fire-rescue, Road Ranger motorist assists and other public service responders to use for temporary relocation off the freeway mainline.

ESS	Interchange			Direction	County
1	Exit 107	CR 896	Pine Ridge Road	South	Collier
2				North	
3	Exit 111	CR 846	Immokalee Road	South	Collier
4				North	
5	Exit 116	CR 865	Bonita Beach Road	South	Lee
6				North	
7	Exit 123	CR 850	Corkscrew Road	South	Lee
8				North	
9	Exit 131	SR 865	Daniels Parkway	South	Lee
10		CR 876		North	
11	Exit 136	SR 884	Colonial Blvd	South	Lee
12		CR 884		North	

Table 2-1 - Emergency Stopping Site Locations

Maintenance and Emergency Response – Not on Interstate

(I-75 and I-275 maintenance is the responsibility of the asset maintenance firm under contract to FDOT – see above.)

FDOT District One has established seven local operations centers and maintenance yards that provide maintenance and emergency response on the state highway system (except I-75 and I-275). Collier County maintains the state highway system roads in Collier County (facility listed below). While FDOT has contracted maintenance and emergency response for I-75 and I-275, resources are available from the operations centers and maintenance yards under extenuating circumstances.

Facility	Address		Phone (24 hr)	Response Area
Collier County Roadway Maintenance	4800 Davis Blvd	Naples	(239) 252-8924	Collier
Okeechobee Maintenance	500 NW 9 th St	Okeechobee	(863) 462-5250	Okeechobee
Sebring Maintenance	4722 Kenilworth Blvd	Sebring	(863) 386-6104	Highlands
Bartow Maintenance	2740 SR 60, West	Bartow	(863) 519-4300	Polk
LaBelle Operations Center	880 W Cowboy Lane	LaBelle	(863) 674-4027	Glades / Hendry
Fort Myers Operations Center	2981 NE Pine Island Rd	Cape Coral	(239) 656-7800	Lee / Charlotte
Arcadia Operations	SR 70 West & Parker St	Arcadia	(863) 993-4634	DeSoto / Hardee
Sarasota Operations Center	1840 61st St	Sarasota	(941) 861-5000	Sarasota / Manatee

Table 2-3 Non-Interstate Maintenance

Collier County Roadway Maintenance

Collier County Road and Bridge Department provides maintenance on state roadways (excluding I-75) in Collier County under contract with FDOT. After-hours calls are taken by an answering service that contacts the on-call person.

Collier County resources include:

- Arrow boards
- Asphalt roller
- Backhoes
- Broom tractor
- Dump trucks
- Forklifts – warehouse and off-road
- Gradall/hydroscopic excavators
- Graders
- Hydraulic water pump, 6”
- Light tower/generator
- Loader
- Low-boy tractor trailers
- On-site fuel
- Paver
- Street sweepers
- Vac trucks
- VMS signs

Ft. Myers Operations Center

Regular working hours at the Fort Myers Operations Center are Monday – Thursday, 7:00 a.m. to 5:30 p.m. After-hours calls are taken by an answering service that pages the on-call supervisor. The main office is staffed on Friday from 7:00 a.m. to 5:00 p.m.

Resources at the FMOC include:

- Attenuator trucks
- Broom tractor
- Loader
- Magnet bar on wheels
- On-site fuel
- Portable signs
- Sand spreader
- Trucks with arrow boards
- Vac truck
- VMS signs

Sarasota Operations Center

Regular working hours at the Sarasota Operations Center are Monday – Thursday, 7:00 a.m. to 5:30 p.m. The office is staffed on Fridays from 8:00 a.m. to 5:00 p.m. After-hours calls are taken by an answering service that forwards them to the on-call supervisor.

Resources at the Sarasota Operations Center include:

- Attenuator trucks
- Broom tractor
- Loader
- Magnet bar on wheels
- On-site fuel
- Portable signs
- Sand spreader
- Trucks with arrow boards
- Vac truck
- VMS signs

FDOT Road Ranger Service Patrols

The Florida Department of Transportation, District One operates a program that provides roving Road Ranger Service Patrol vehicles in the five District counties traversed by I-75: Collier, Lee, Charlotte, Sarasota and Manatee. The units are privately owned, specially equipped utility body trucks working under contract to FDOT.

The primary purpose of the patrol service is to respond to non-recurring incidents such as motor vehicle collisions, material spills and vehicle disabilities. The response and assistance provided at these incidents by the patrol helps reduce the disruption to the traffic stream and improves safety to motorists and other incident scene responders. All services are provided free of charge.

The Service Patrol Vehicles operate seven days per week, twelve to eighteen hours per day (see table below) and patrol I-75 from the Broward County line to Mile 229 in Manatee County, and I-275 to the Sunshine Skyway Bridge. FDOT handles dispatch and program administration. Dispatch is through the SWIFT Center. When not on a call, the Service Patrol Operators patrol the assigned beat. They work under the direction of FHP personnel at major incident scenes.

The Road Ranger patrol units rove the five counties looking for incidents and responding to calls relayed from the SWIFT SunGuide Center. Road Rangers respond to calls from the roadside call boxes to assess and assist motorists with disabled vehicles. Road Rangers provide emergency traffic control and provide other assistance to FHP and other responders at incident scenes.

FDOT District One funds the Road Ranger Service Patrol Program in Collier, Lee, Charlotte, Sarasota, and Manatee Counties. Anchor Towing and Marine Transport is under contract to FDOT to provide these services.

Calls for assistance made by motorists activating the Motorist Aid call boxes, by calling *FHP, or through other sources, are received by FDOT at the SWIFT SunGuide Center. The Center notifies the Road Rangers by radio. Cell phones are used as a backup.

**To request a Road Ranger Service Patrol Unit for assistance,
dial
(239) 225-9860 (SWIFT SunGuide Center)
or
*FHP (*347)**

Contact Numbers:

Road Ranger Supervisor
Anchor Towing President

Bob Diezi
Lourdes Daniel

(954) 662 7791
(954) 436 9238

FDOT Project Manager

Bill Fuller

(239) 225-9815 Office
(239) 297-0684 Mobile

Duties

Florida Department of Transportation Road Ranger Service Patrol

I-75 in Collier, Lee, Charlotte, Sarasota and Manatee Counties

- Continually rove a freeway segment (beat) to detect and respond to traffic incidents and provide free assistance to motorists in need. Road Rangers are dispatched to incidents by the SWIFT SunGuide Center. Motorist assistance includes minor repairs, tire changing, jump starts, water, fuel or the use of a cell phone, etc.
- Immediately take action to clear the lanes of all disabled or damaged vehicles (no injuries).
- Clear small debris and non-hazardous spills from the roadway.
- Take action as a first responder. Call the SWIFT SunGuide Center for FHP and appropriate Fire Rescue agencies for serious traffic accidents. The operator protects the scene by setting cones, flares and using the truck mounted arrow board to establish emergency temporary traffic control.
- Make every attempt to reduce the impact on traffic while maintaining scene safety. Render assistance to FHP, Fire and other responders as needed.
- Inform any vehicle driver that he will assist them in following Florida Law by relocating disabled vehicles that are obstructing traffic to a safe location.
- The Service Patrol relocates vehicles out of traffic or hazardous locations. Once vehicles are on the shoulder, if towing services are required, the Service Patrol contacts the SWIFT SunGuide Center for FHP dispatch from the tow rotation list.

FDOT District One
Road Ranger Service Patrol Beats

I-75 & I-275

County	Number of Trucks	Milepost		Beat Miles	Hours of Operation	
		Begin	End		Mon-Fri	Sat-Sun
Collier	1-2	49	105	56	5 am – 11 pm	9 am – 9 pm
Lee	1-2	105	136	31	6 am – 7 pm	9 am – 9 pm
Charlotte	1-2	136	170	34	6 am – 6 pm	9 am – 9 pm
Sarasota	1-2	170	213	43	7 am – 7 pm	9 am – 9 pm
Manatee	1	210	229	19	7 am – 7 pm	9 am – 9 pm
Sunshine Skyway Bridge	1	1	13	12	7 am – 7 pm	11 am – 7 pm

Table 2-4 Road Ranger Coverage

Bridge Inspection

Emergency bridge inspection services are provided to FDOT under contract by ICA.

Contact Number: (866) 335-9696

Sunshine Skyway Bridge Warning Signs

There are six CLOSED WHEN FLASHING signs on the Manatee County approaches to the Sunshine Skyway Bridge. The signs are activated by the flasher paging system located at the Manatee County shop. When the need arises, FHP (Troop C or Troop F) contacts Manatee County who sends out a group page which will turn on (or off) all the Skyway Warning Flashers. It takes approximately 30 seconds for the flashers to activate from the time the page is sent.

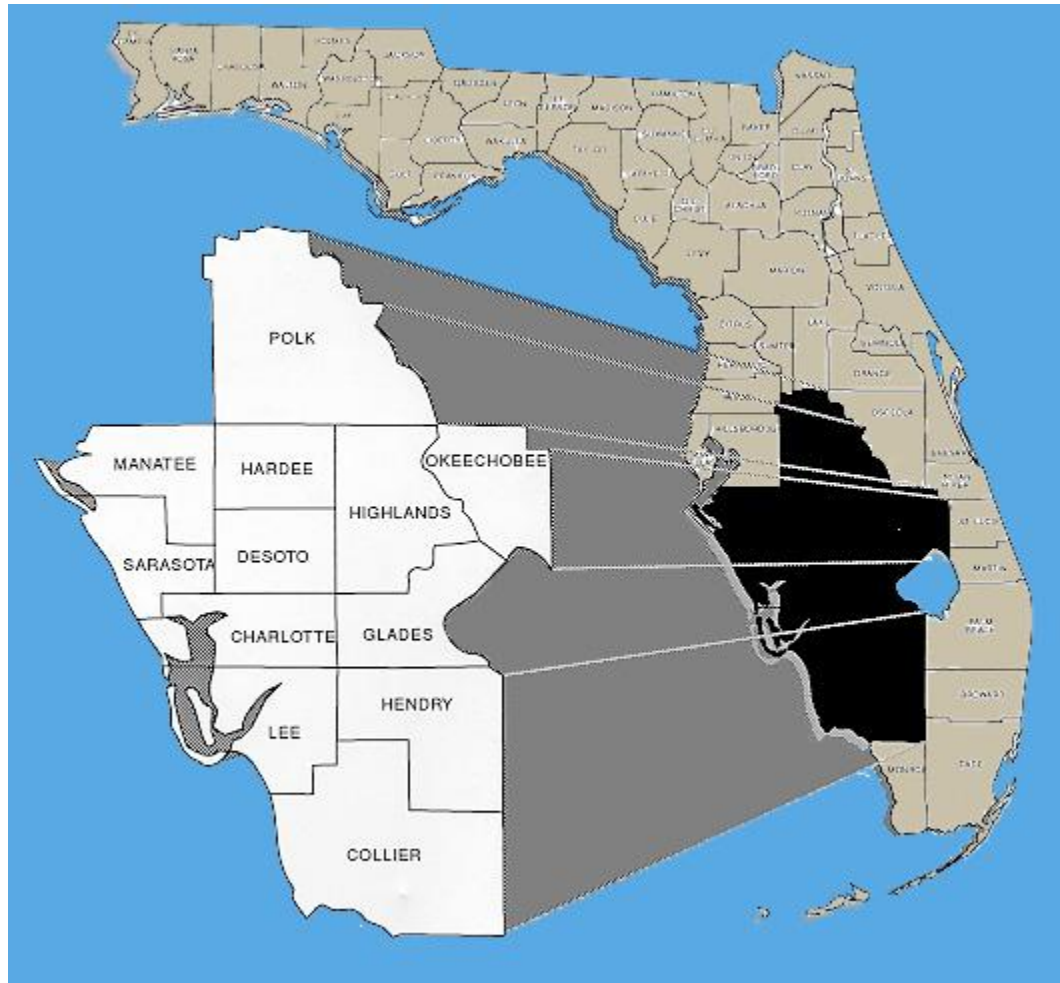
FHP makes visual confirmation that the flashing lights are on or off.

The signs are maintained by DBi Services. Problems with the signs should be reported to DBi at (239) 479-7700.

Other FDOT contact numbers:

Bridge Maintenance	ICA	(866) 335-9696
FDOT Bartow Emergency Notification Recording		(863) 519-2999
FDOT Bartow	Emergency	(863) 279-5096
Fuel spills (25+ gallons)	Hoffer and Associates	(941) 204-5033
	Or	(941) 628-0205
Hi-mast lighting contractor	Southern Lights	(941) 737-2614
Motor Carrier Compliance		(239) 225-9600
	Emergency cell	(239) 633-5671
Rest Area	Daniels	(239) 561-2133
Rest Area	Jones Loop	(941) 613-3880
State Watch Office	Emergencies Only	(800) 320-0519
	Non-Emergencies	(850) 413-9900
	TDD Emergencies & Non-Emergencies	(800) 226-4329
Weigh Station	Northbound	(941) 575-5795
Weigh Station	Southbound	(941) 575-5800

FDOT DISTRICT ONE - SOUTHWEST FLORIDA

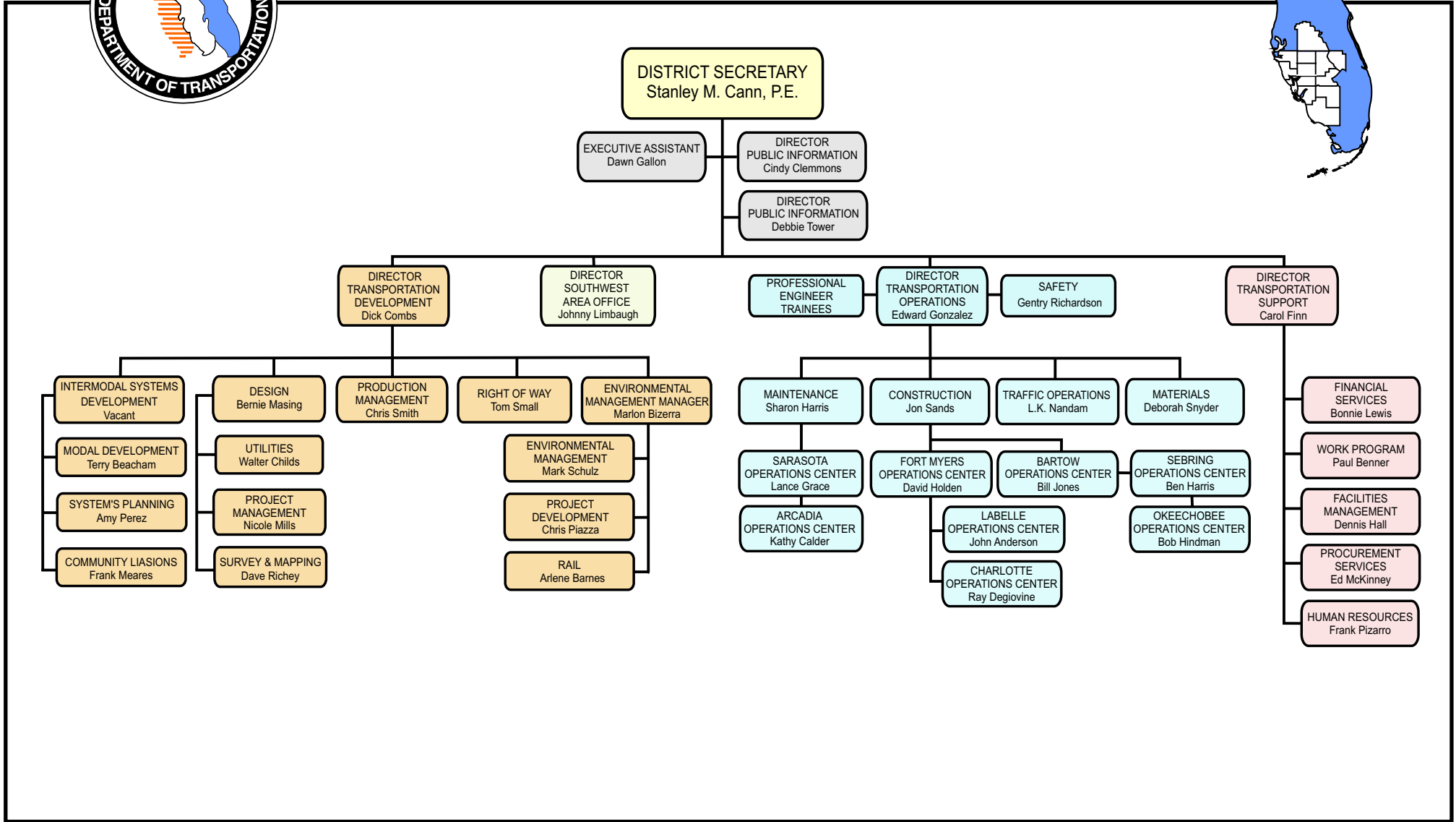
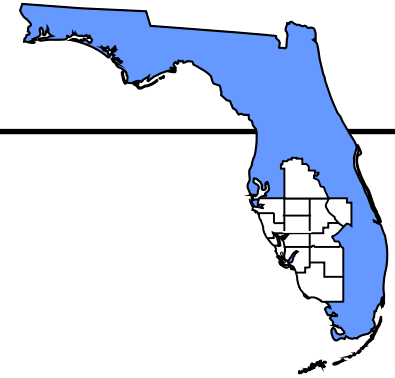
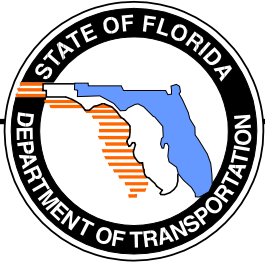


Major cities: Arcadia, Bartow, Fort Myers, Lakeland, Naples, North Port, Sarasota, Sebring, and Venice.

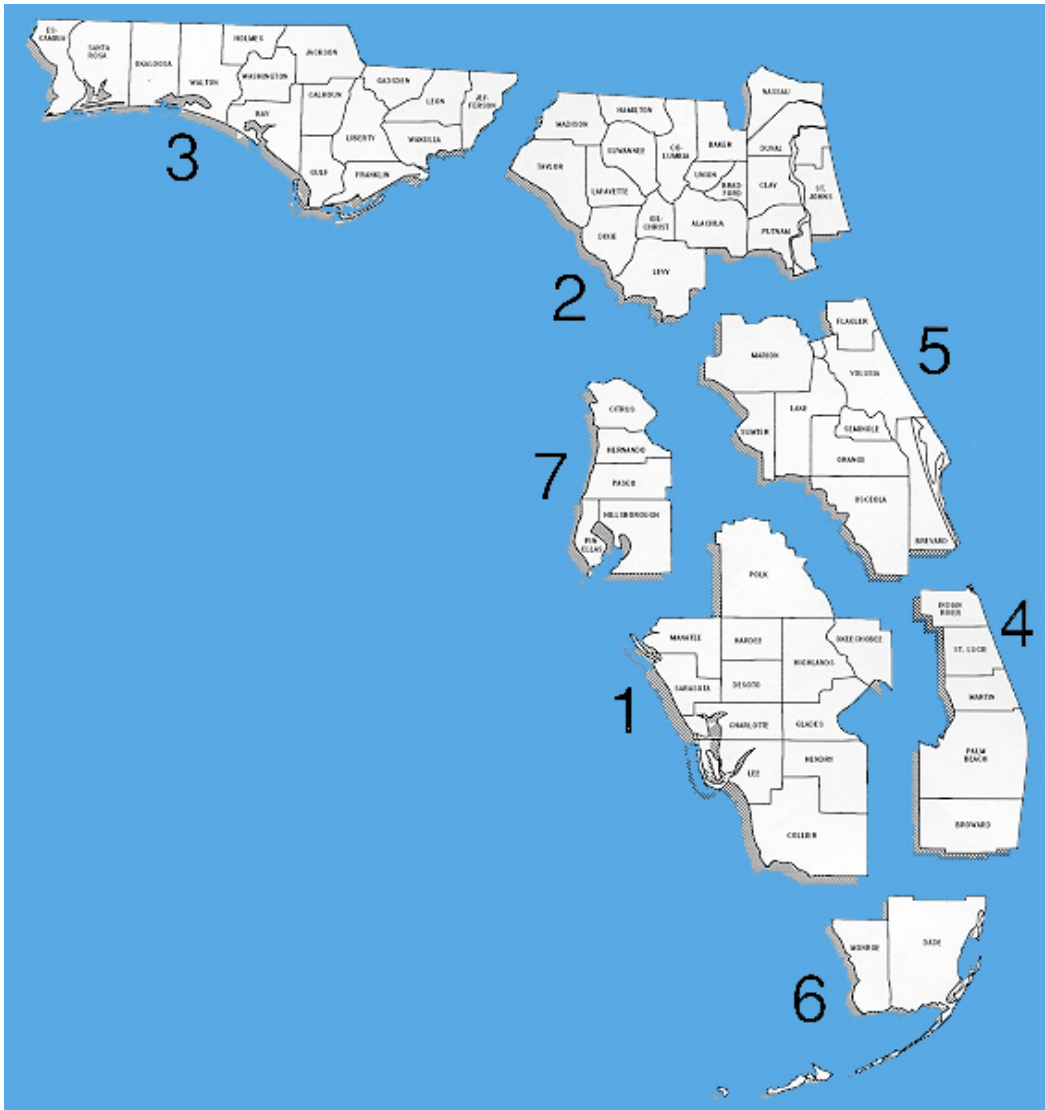
Counties: Charlotte, Collier, De Soto, Glades, Hardee, Hendry, Highlands, Lee, Manatee, Okeechobee, Polk, and Sarasota.

FLORIDA DEPARTMENT OF TRANSPORTATION

District One Overview Chart



Florida Department of Transportation



Toll Free Phone Numbers

Central Office DOT: 866-374-FDOT (3368)

- District 1 -- 1-800-292-3368 (Bartow)
- District 2 -- 1-800-749-2967 (Lake City)
- District 2 -- 1-800-207-8236 (Jacksonville)
- District 3 -- 1-888-638-0250 (Chipley)
- District 4 -- 1-866-336-8435 (Ft. Lauderdale)
- District 5 -- 1-800-780-7102 (Deland)
- District 6 -- 1-800-435-2368 (Miami)
- District 7 -- 1-800-226-7220 (Tampa)
- Turnpike Enterprise -- 1-800-749-7453

DIVISION OF
FLORIDA HIGHWAY PATROL

TROOP F

FORT MYERS DISTRICT
BRADENTON DISTRICT
VENICE DISTRICT
NAPLES & ARCADIA -
SUB-DISTRICTS

FLORIDA HIGHWAY PATROL TROOP F

Troop Headquarters is located at the Bradenton District Station in Manatee County. Troop F is commanded by a Major who is charged with the operations of the ten counties which comprise the troop. The ten counties are broken down into four districts: the Bradenton District, the Arcadia district, the Venice District and the Fort Myers district. There are six station facilities located throughout the troop including district offices in Bradenton, Venice, Arcadia and Fort Myers and sub-district offices in Naples and Lake Placid.

The Bradenton District is located at Troop F Headquarters and includes all of Manatee County. The Bradenton District is commanded by a Captain. Other staff includes 3 Lieutenants, five Sergeants, six Traffic Homicide investigators and fifteen troopers.

The Arcadia District is located in Arcadia and includes **Desoto County, Hardee County and Highlands County**. The Arcadia District is a sub-district of the Bradenton District and is commanded by a Lieutenant. Other staff includes four Sergeants, four Traffic Homicide Investigators and fifteen troopers assigned thru-out the three counties.

The Venice District is located in Venice and includes **Sarasota County and Charlotte County**. The Venice District is commanded by a Captain. Other staff includes one Lieutenant, three Sergeants, six Traffic Homicide Investigators and twenty-nine troopers.

The Fort Myers District is located in Fort Myers and includes **Lee County, Glades County, Hendry County and Collier County**. Collier County is also responsible for that portion of Alligator Alley(SR93) that runs to the East Tollgate in Broward County. The Fort Myers District is commanded by a Captain. Other staff includes four Lieutenants, ten Sergeants, eleven Traffic Homicide Investigators, and fifty-four troopers, which includes three Felony teams, with canines, working in the four counties. Fort Myers is also the location for the Regional Communication Center. The FMRCC is also commanded by a Captain, and includes one Lieutenant, four Duty Officer Supervisors, and twenty-seven Duty Officers, that handle all dispatching duties for state law enforcement officers in nine agencies within the ten county area.

DIVISION OF FLORIDA HIGHWAY PATROL
Troop F – Ft Myers District
4700-3 Terminal Drive, Ft. Myers, Florida 33907

FAX 239-278-7349

Contact Numbers

Information	All Hours	239-938-1800
Office	District Headquarters	239-278-7100
	Naples Sub-District	239-354-2379
Clerks	Ft. Myers District	239-278-7107
	Naples Sub-District	239-354-2379
Records		239-278-7107
Dispatch/FMRCC		239-938-1800
Duty Officer Supervisor	FMRCC	239-938-1800
Major Carlos Vasquez	Troop Commander	941-751-7647 Ext. 10
Captain Tim Culhane	District Commander	239-278-7390
Captain Terry Davis	FMRCC Commander	239-938-1815
Lt. John Tower	Ft. Myers District	239-278-7100 Ext 378
Lt Paul France	Naples Sub-District	239-354-2382
FMRCC Shift Commander		239-938-1816

DIVISION OF THE FLORIDA HIGHWAY PATROL

Troop F – Venice District

4010 South Tamiami Trail, Venice, Florida

FAX 941-483-5916

Contact Numbers

Information	All hours	941-483-5911 239-938-1800
Office	District Headquarters	941-483-5911 ext 100
Clerks	Venice District	941-483-5911 ext 110
Records		941-483-5911 ext 112
Court Liaison		941-483-5911 ext 112
Dispatch/FMRCC		239-938-1800
Duty Officer Supervisor	FMRCC	239-938-1813/00
Shift Commander	FMRCC	239-938-1816
Major Carlos Vasquez	Troop Commander	941-751-7647 ext 106
Captain John Donovan	District Commander	941-483-5911 ext 111
Captain Terry Davis	FMRCC Commander	239-938-1815
Lt. Thomas Przybylowicz	Venice District	941-483-5911 ext 114

DIVISION OF FLORIDA HIGHWAY PATROL
Troop F – Bradenton District
5023 53rd Avenue East, Bradenton, Florida 34203-4134

FAX 941-753-0923

Contact Numbers

Information	All hours	941-751-7647 239-938-1800
Office	District Headquarters Arcadia Sub-District	941-751-7647 ext 100 863-993-4618
Records	Arcadia Sub-District	941-751-7647 ext 100 863-993-4618 ext 201
Clerks	Arcadia Sub-District	941-751-7647 ext 107 863-993-4618 ext 206
Dispatch/FMRCC		239-938-1800
Duty Officer Supervisor	FMRCC	239-938-1813/00
Shift Commander	FMRCC	239-938-1816
Major Carlos Vasquez	Troop Commander	941-751-7647 ext 106
Captain John Baumann	District Commander	941-751-7647 ext 104
Captain Terry Davis	FMRCC Commander	239-938-1815
Lt Christopher Miller		941-751-7647 ext 118

**DIVISION OF FLORIDA HIGHWAY PATROL
Troop F – Fort Myers District
4700-3 Terminal Drive, Fort Myers, Florida 33907**

WRECKER LIST

**TOWING AND RECOVERY COMPANIES USED IN COLLIER AND LEE COUNTIES
Updated November 22, 2010**

LEE COUNTY

Eddies	1240 Viscaya Pkwy, Cape Coral	239-574-2905
Jaimes	160 Hunter Blvd, Cape Coral	239-656-2833
AFA Texaco	19003 San Carlos Blvd, Ft Myers Beach	239-463-2866
Andy's Towing	12741 Metro Pkwy, Ft Myers	239-561-8697
Island Garage	1609 Periwinkle, Sanibel	239-472-4318
South Trail Amoco	7010 Cypress Terrace, Ft Myers	239-935-7074
Colonial Wrecker Svc	1968 Custom Dr, Ft Myers	239-936-4638
Red's OK	10550 Deer Run Farms Rd, Ft Myers	239-936-4461
T & M Body Shop	17305 Pine Ridge Rd Ft Myers	239-466-3020
Alligator Towing	4871 Dr. M L King Blvd, Ft Myers	239-337-5800
Superior Towing	3201 Palm Beach Blvd Ft Myers	239-332-5444
Alley Cat	3220 Palm Av, Ft Myers	239-994-1310
Gene's	3100 Kennesaw, Ft Myers	239-334-2323
G & C Towing	3865 Bonita Beach Rd, Bonita	239-947-1555
S/T Towing	8144 Mainline Pkwy Ft Myers	239-415-4357

TOWING AND RECOVERY COMPANIES USED IN COLLIER AND LEE COUNTIES

COLLIER COUNTY

American Lely	11200 E. Tamiami Tr, Naples	239-775-7114
Dave's Towing	3514 Plover Av, Naples	239-434-0858
Economy Towing	2240 Davis Blvd, Naples	239-775-6860
T & C Towing	4269 Enterprise Av Naples	239-348-7056
Yoders' Body Shop	2303 Kirkland Av, Naples	239-250-0085
Bald Eagle Towing	754 Elkcam Cr, Marco Island	239-403-0000
AA Auto	2180 Corporation Blvd Naples	239-348-7055
Bakers' Towing & Rec	5643 Taylor Rd, Naples	239-793-4334
Bumper to Bumper	1875 Seward Av, Naples	239-597-1125
Coastland Towing	5929 Shirley St, Naples	239-597-5299
Dixon's Towing	6440 Sable Ridge Rd, Naples	239-598-2997
Morleys' Towing	6344 Janes Dr , Naples	239-597-6711

**DIVISION OF FLORIDA HIGHWAY PATROL
Troop F – Venice District
4010 S. Tamiami Trail, Venice, Florida 34293**

WRECKER LIST

**TOWING AND RECOVERY COMPANIES USED IN SARASOTA AND CHARLOTTE
COUNTIES**

Updated November 22, 2010

Direct Towing	2041 20th St, Sarasota	941-365-6823
Elite Towing	1830 Nebraska, Sarasota	941-954-0100
Upton's Towing	2231 2nd St, Sarasota	941-924-7084
Westcoast Towing	1120 N. Goodrich Av Sarasota	941-923-1345
Flagship/Konrads	103 Corporation Way, Sarasota	941-484-7968
Johnson's Towing	604 N. Tamiami Tl., Nokomis	941-488-8022
Venice Wrecker	502 N. Church St, Nokomis	941-488-6555
Gullotta's	6506 San Casa Dr, Englewood	941-473-9300
Stern's	1590 S. McCall Rd, Englewood	941-496-0123
A-1 Auto Body	23309 Harbor View Rd, Charlotte Harbor	941-629-3731
Cleveland Auto Body	5136 Duncan Rd, Punta Gorda	941-916-2260
Prompt Towing	11139 Tamiami Tl, Punta Gorda	941-639-4000
Quillins'	120 E. Ann St, Punta Gorda	888-321-1342
Advanced Towing	2060 20 St ,Sarasota	941-362-2966
Jim's Auto Repair	5693 Sarah Av, Sarasota	941-921-6792

**DIVISION OF FLORIDA HIGHWAY PATROL
Troop F – Bradenton District
5023 53rd Avenue East, Bradenton, Florida 34203-4134**

WRECKER LIST

**TOWING AND RECOVERY COMPANIES USED IN MANATEE COUNTY
Updated November 22, 2010**

Steve Whites	824 8th Av West, Palmetto	941-722-4367
Bakers Auto Body	903 3rd Av West, Palmetto	941-725-1555
Bakers' Towing	2903 9th St West Bradenton	941-725-4449
Barfields Wrecker	4801 15th St East Bradenton	941-753-2567
Top Gun	3001 14 Street West, Bradenton	941-747-7809
Elmers Auto	6732 15th St Ct West, Bradenton	941-758-4228
Matts Express	1304 27th Av East, Bradenton	941-758-6200
Norms Towing	1855 63rd Av East, Bradenton	941-756-2000
USA Towing	5004B 301 Blvd East, Bradenton	941-758-9179
Upton's Towing	4830 14th St West, Bradenton	941-750-9791

SECTION 3

Fire Rescue & EMS



FIRE RESCUE

Response Areas on I-75 and I-275

NORTHBOUND I-75

Agency	Limits	Milepost
Ochopee Fire Control & Rescue	Broward Co. Line to Mile 82	50.9 - 82
Golden Gate Fire Control & Rescue	Mile 82 to Golden Gate Parkway Overpass	82 - 104.6
North Naples Fire Control & Rescue	Golden Gate Parkway Overpass to Lee Co. Line	104.6 - 115
Bonita Springs Fire Control & Rescue	Collier Co. Line to Mile 120.5	115 - 120.5
Estero Fire Rescue	Mile 120.5 to 125.5	120.5 - 125.5
San Carlos Park Fire Control & Rescue	Mile 125.5 to Mile 129	125.5 - 129
South Trail Fire Control & Rescue	Mile 129 to SR 884 Colonial Blvd	129 - 136
Fort Myers Fire	SR 884 Colonial Blvd to Lockett Rd	136 - 139
Tice Fire Control & Rescue	Lockett Rd to Caloosahatchee River	139 - 141.4
Bayshore Fire Control & Rescue	Caloosahatchee River Charlotte Co. Line	141.4 - 148.5
Charlotte County	Lee Co Line to Sarasota Co Line	148.5 - 170.5
North Port Fire District	Charlotte Co. Line to CR 777 River Rd	170.5 - 191
Sarasota County Fire Dept.	CR 777 River Rd to Laurel Rd	191 - 195
Venice Fire Dept. (Fire)	Laurel Rd to MP 199 (Crossover)	195 - 199
Nokomis Fire Dept. (Fire)	MP 199 Crossover to SR 72 Clark Rd	199 - 205
Sarasota County Fire Dept. (Rescue)	Laurel Rd to SR 72 Clark Rd	195 - 205
Sarasota County Fire Dept.	SR 72 Clark Rd to University Parkway	205 - 213.1
East Manatee Fire Rescue District	University Parkway to Manatee River	213.1 - 224
North River Fire District	Manatee River to Hillsborough Co Line	224 - 233.7

NORTHBOUND/WESTBOUND I-275

Agency	Limits	Milepost
North River Fire District	I-75 to Sunshine Skyway Br	0 - 16

FIRE RESCUE

Response Areas on I-75

SOUTHBOUND

Agency	Limits	Milepost
North River Fire District	Hillsborough Co Line to Manatee River	233.7 - 224
East Manatee Fire Rescue District	Manatee River to University Parkway	224 - 213.1
Sarasota County Fire Dept.	University Parkway to MP 199 Crossover	213.1 - 199
Sarasota County Fire Dept. (Rescue)	MP 199 (Crossover) to Jacaranda Blvd.	199 - 193
Venice Fire Dept. (Fire)	MP 199 (Crossover) to Jacaranda Blvd	199 - 193
Sarasota County Fire Dept.	Jacaranda Blvd to MP 186 (Crossover)	193 - 186
North Port Fire District	MP 186 (Crossover) to Charlotte Co Line	186 - 170.5
Charlotte County	Sarasota Co Line to Lee Co Line	170.5 - 148.5
Bayshore Fire Control & Rescue	Charlotte Co. Line to Caloosahatchee River	148.5 - 141.4
Tice Fire Control & Rescue	Caloosahatchee River to SR 82 ML King Jr Blvd	141.4 - 138
Fort Myers Fire	SR 82 ML King Jr Blvd to SR 884 Colonial Blvd	138 - 136
South Trail Fire Control & Rescue	SR 884 Colonial Blvd to Mile 129	136 - 129
San Carlos Park Fire Control & Rescue	Mile 129 to Mile 125.5	129 - 125.5
Estero Fire Rescue	Mile 125.5 to Mile 120.5	125.5 - 120.5
Bonita Springs Fire Control & Rescue	Mile 120.5 to Collier Co. Line	120.5 - 114.4
North Naples Fire Control & Rescue	Lee Co. Line to Golden Gate Parkway Overpass	114 - 104.6
Golden Gate Fire Control & Rescue	Golden Gate Parkway Overpass to Mile 82	104.6 - 82
Ochopee Fire Control & Rescue	Mile 82 to Broward Co. Line	82 - 50.9

SOUTHBOUND/EASTBOUND I-275

Agency	Limits	Milepost
North River Fire District	Sunshine Skyway Br to I-75	16 - 0

Fire Rescue Departments

	Station/Admin	Emergency/Dispatch
Alva	239-728-2223	9-1-1
Bayshore	239-543-3443	9-1-1
Boca Grande	941-964-2908	9-1-1
Bonita Springs	239-949-6200	239-337-2000 / 9-1-1
Bradenton	941-708-6233	941-749-1111 / 1112
Cape Coral	239-949-6200	9-1-1
Captiva	239-242-3301	9-1-1
Cedar Hammock	941-751-7090	941-748-2222 / 2246
Charlotte 9-1-1 CSO	941-474-3233	941-474-3233
Charlotte Co Fire/EMS	941-743-1367	9-1-1
Charlotte CSO direct to EMS		941-639-0013
Desoto County	863-993-4700	863-993-4842
East Manatee	941-751-5611	941-748-2222 / 2246
Englewood	941-474-3311	941-861-5988
Estero	239-390-8000	239-337-2000 / 9-1-1
Forestry		941-751-7627 / 7629
Fort Myers	Station One	239-321-7311
	Shift Command	239-321-7323
	Shift Command Cell	239-851-5604
Fort Myers Beach	239-463-6164 / 6163	9-1-1
Fort Myers Shores	239-694-2833	9-1-1
Golden Gate	239-348-7540	239-207-4421 / 9-1-1
Hillsborough Fire		813-681-9927
Iona-McGregor	239-433-0660	9-1-1
Lee County EMS	239-533-3911	239-337-2000 / 9-1-1
Lehigh Acres	239-344-1600	9-1-1
Longboat Key Dispatch		941-316-1977
Manatee ECC		941-748-2222 / 747-7776
Manatee County		941-748-2222 / 2246
Matlacha-Pine Island	239-283-0030	9-1-1
Myakka City	941-322-2292	941-748-2222 / 2246
Nokomis	941-488-8855	941-861-5988 / 9-1-1
North Fort Myers	239-997-8654	9-1-1
North Naples	239-597-3222	239-913-7146 / 9-1-1

North Port	941-240-8150	941-861-5988 / 9-1-1
North River	941-721-6700	9-1-1
Ochopee	M – F, 8a – 5p	239-695-4114
	Weekends	239-695-2902
Port Authority Airport ARFF	239-590-4566	
Punta Gorda	941-575-5529	9-1-1
San Carlos Park	239-267-7525	239-337-2000 / 9-1-1
Sanibel	239-472-5525	9-1-1
Sarasota Airport CFR	359-5048 fax	941-359-5911
Sarasota County	941-861-5300	941-861-5988
South Manatee	941-751-7675	941-748-2222 / 2246
South Trail	239-433-0080	9-1-1
State Division of Forestry	239-690-3500	9-1-1
Tampa		813-232-6802 / 6805
Tice	239-694-2380	9-1-1
Upper Captiva	239-472-8899	9-1-1
Useppa Island	239-283-7578	9-1-1
Venice	941-480-3030	941-861-5941
West Manatee	941-741-3900	9-1-1

SECTION 4

Index & Listings Contacts & Resources for Freeway Incidents



Table of Contents

HAZARDOUS MATERIALS INCIDENTS

Haz-Mat Emergency Response Resources	1
Haz-Mat Teams.....	1
Other Haz-Mat Contacts	2
Environmental Clean-up Services	2
Petroleum Terminals and Tank Truck Transporters.....	2
Chemical Spills - Agency/Association Resources	2
Chemical Companies - National Emergency Hotlines.....	3
Sand.....	3
Sandbags.....	3
Soda Ash, Lime and Chemical Neutralizing Supplies	3
Drums and Overpacks.....	4
Chemical Pumps.....	4
Foam, Fire Fighting (large quantities)	4
Haz-Mat Absorbents	4
Wind and Weather Forecasting.....	4
FDEP Emergency Response Contractors	5

FREEWAY INCIDENTS

Airports.....	7
Ambulances	7
American Red Cross.....	7
Animal Control, Treatment and Disposal Contacts	8
Animals – Large Animal Removal and Disposal.....	8
Animals – Large Animal Rescue by County.....	8
Barrier Wall, Pre-cast.....	9
Bridges	9
Bridge Damage Inspection	9
Buses.....	10
Compressors (Air)	10
Concrete Cutting and Breaking	10
County Departments and Agencies.....	10
Cranes and Heavy Lifting Equipment.....	10
Lifting Equipment	11
Crisis Prevention/Treatment	11
Dumpsters and Hoppers	11
Emergency Management Agencies	12
Explosives	13
Fire Marshal.....	13
Fire Rescue Departments.....	13
Generators (Large).....	15
Government Agencies – County.....	15
Government Agencies – Federal	17
Government Agencies – Municipal.....	18
Government Agencies – State	19

Helicopters	20
Hospitals	21
Hotels and Motels (Sarasota County).....	23
Hydraulic Equipment Repair	25
Law Enforcement Agencies	26
Loaders, Bobcats and Forklifts.....	28
Locksmith.....	29
Lumber Companies	30
Manpower - Temporary Labor.....	30
Marine Patrol	30
Media	30
Medical Examiner.....	31
Mental/Medical	31
Motor Clubs – Road Service.....	31
Photography (Aerial)	31
Pesticide Assistance	31
Poison Control	32
Public Information Officers (Agency PIOs).....	32
Public Safety Answering Points (PSAPs).....	32
Radio Traffic Reporting and TV Stations.....	33
Rental Car Companies.....	33
Rental Trucks	33
Sea Tow	34
Service Agencies	34
Radio Amateur Civil Emergency Services (RACES).....	35
Solid Waste	35
State Watch Office	35
Street Sweeping.....	35
Taxi Companies	36
Tires, Truck & Machine Tire Repair	36
Toilets (Portable).....	37
Traffic Control Devices and Services	37
Transportation Agencies	37
Transportation: Facilities and Operations	38
Tree Removal	38
Trucking Services – Heavy Hauling, Flatbeds and Lowboys.....	39
Trucking-Motor Freight, Tractor Trailers.....	39
Truck-Trailers, Refrigerated Vans.....	39
Utilities.....	40
Walk-In Clinics	41
Water Resources.....	41
Weather	41
Welding and Mobile Repair	41
Wreckers	42
Light Duty Towing and Road Service	42

Resource Contacts related to
HAZARDOUS MATERIALS INCIDENTS

Haz-Mat Emergency Response Resources

3E Company		800-451-8346
Assoc of American Railroads Haz-Mat/ Explosives 24 hr line		202-639-2222
Bio-Hazardous Waste		941-743-1266
Charlotte County Hazardous Waste		941-764-4380
Chem-Tel Inc		888-255-3924
Chemtrec 24 hour Emergency Number	Press 1 for Emergency	800-424-9300
Florida Bureau of Emergency Response – Ft. Myers		239-344-5600
Haz Mat Hotline		800-635-7179
Hoffer & Associates		941-204-5033
		866-942-3846
Infotrac		800-535-5053
Military Shipments	Explosives/ammunition incidents	703-697-0218
	All other dangerous good incidents	800-851-8061
National Response Center and Terrorist Hotline		800-424-8802
Nationwide Poison Control Center		800-222-1222
Oil and Hazardous Materials Spills (USCG)		800-424-8802
Radiological Response		407-297-2095
Sarasota County Water Resources		941-861-6220
Sarasota County Hazardous Waste		941-316-1301
State Fire Marshal		941-338-2327
State Watch Office		800-320-0519
US EPA Region IV Office, Atlanta 24 hour number		404-562-8700
US Coast Guard (National Response Center and Terrorist Hotline)		800-424-8802
US Dept of Transportation Office of Hazardous Materials		800-467-4922

Haz-Mat Teams

Collier County Direct Response Team	239-252-9300
Fort Myers Fire Rescue via Lee Control/County Warning Point	239-337-2000
Sarasota County and Venice Fire Department	941-316-1201

Chemical Companies - National Emergency Hotlines

Arch Chemical	800-654-6911
BASF	800-832-4357
Dow Chemical	800-822-4357
DuPont Chemical	800-441-7515
Eastman Chemical Company	423-229-2000
Helena Chemical Company	901-761-0050
Hendrix & Dail: Ricky Keck, Safety Expert 24 hour	813-267-1317
Mallinckrodt	314-654-2000
Monsanto	314-694-1000
Monsanto Product Information Technical Support	800-332-3111
Shell Chemical	713-473-9461
Solaris Products	800-454-2333
Olin	888-289-1911
Ortho/RoundUp	800-255-2883
West Corp (formerly Ciba-Giegy)	800-334-9784

Sand

FDOT		Ft. Myers	239-656-7800
FDOT		Sarasota	941-359-7300
Florida Rock Industry	14341 Alico Rd	Ft Myers	239-454-2831
Harper Bros Inc Alico Quarry	Alico Rd Extension		239-267-1803
RMC South Florida Materials	14500 Corkscrew Rd	Estero	239-498-4990
Southwest Aggregates	16070 Tamiami Tr	Punta Gorda	239-567-1800
Surface Prep Supply	4101 NW 70 th Ave	Miami	305-593-1430

Sandbags

Florida Transcor, Inc.	6683 Stuart Ave.	Jacksonville	800-766-7604
	5402-B Pioneer Park Blvd.	Tampa	813-882-3168

Soda Ash, Lime and Chemical Neutralizing Supplies

Haz-Mat Response Teams may have small quantities.

Larger quantities may be obtained from the environmental clean-up services.

Drums and Overpacks

Haz-Mat Response Teams all have small quantities drums or overpacks.

Larger quantities may be obtained from the environmental clean-up services.

Chemical Waste Management	24 Hour	800-438-2382
----------------------------------	----------------	---------------------

Chemical Pumps

Holland Pump		941 267 4100
---------------------	--	---------------------

Foam, Fire Fighting (large quantities)

Ten-8 Fire Equipment		941-756-7779
-----------------------------	--	---------------------

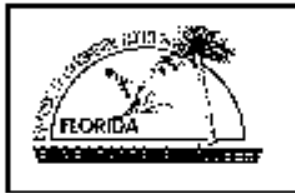
Haz-Mat Absorbents

Haz-Mat Response Teams have small quantities of absorbents.

Large quantities of various absorbents, pads, pig pillows, and booms can be obtained from the environmental clean-up services.

Wind and Weather Forecasting

National Weather Service – Miami Office	305-229-4502
National Weather Service – Tampa Office	813-645-4111



FDEP 24-hr. Emergency Response # (800) 320-0519
Florida Department of Environmental Protection, Bureau of Emergency Response
24-HOUR EMERGENCY RESPONSE CONTRACTORS

Emergency Response Contractors are listed by the county in which they maintain an office. Most Emergency Response Contractors can provide service to other counties and some provide service statewide. BER does not endorse any contractor and a firm's absence or presence does not imply prejudice or impropriety. Call the FDEP Bureau of Emergency Response at (850) 245-2010 with any questions.

CONTRACTOR NAME	OFFICE (County)	24-HOUR #	RESPONSE TYPE
A&S Oil Recovery of Florida, Inc.	Pinellas	(727) 321-2602	HZ, P
AAG Environmental	Alachua	(800) 472-9251	HZ, P
AAG Environmental	Orange	(800) 472-9251	HZ, P
AAG Environmental	Taylor	(800) 472-9251	HZ, P
AAG Environmental	Marion	(800) 472-9251	HZ, P
AAG Environmental	Seminole	(800) 472-9251	HZ, P
AAG Environmental	Volusia	(800) 472-9251	HZ, P
AM Environmental	Palm Beach	(561) 779-6394	HZ, P
American Compliance Technologies	Alachua	(800) 226-0911	HZ, P, X, R, Hg
American Compliance Technologies	Broward	(800) 226-0911	HZ, P, X, R, Hg
American Compliance Technologies	Hillsborough	(800) 226-0911	HZ, P, X, R, Hg
American Compliance Technologies	Lee	(800) 226-0911	HZ, P, X, R, Hg
American Compliance Technologies	Orange	(800) 226-0911	HZ, P, X, R, Hg
American Compliance Technologies	Pinellas	(800) 226-0911	HZ, P, X, R, Hg
American Compliance Technologies	Polk	(800) 226-0911	HZ, P, X, R, Hg
American Compliance Technologies	Seminole	(800) 226-0911	HZ, P, X, R, Hg
American Compliance Technologies	Volusia	(800) 226-0911	HZ, P, X, R, Hg
American Compliance Technologies	Duval	(800) 226-0911	HZ, P, X, R, Hg
Affordable Environmental Audits	Sumter	(352) 568-1930	HZ, P
Clark Environmental, Inc.	Polk	(863) 425-4884	HZ, P
Clean Harbors Environmental Services, Inc.	Polk	(800) 699-8916	HZ, P, Hg
Cliff Berry, Inc.	Broward	(800) 899-7745	HZ, P, Hg
Cliff Berry, Inc.	Brevard	(321) 639-4199	HZ, P, Hg
Cliff Berry, Inc.	Miami-Dade	(800) 899-7745	HZ, P, Hg
Cliff Berry, Inc.	Duval	(800) 899-7745	HZ, P, Hg
Cliff Berry, Inc.	St. Lucie	(800) 899-7745	HZ, P, Hg
Cliff Berry, Inc.	Hillsborough	(800) 899-7745	HZ, P, Hg
Common Ground Environmental, Inc.	Polk	(863) 860-0826	HZ, P
Diversified Environmental Services, Inc.	Hillsborough	(813) 248-3256	P
Eco-Care, Inc.	Miami-Dade	(305) 558-2277	HZ, P, Hg
Environmental Hazmat Services, Inc.	Houston, Alabama	(866) 440-8734	HZ, P
Environmental Management Solutions, LLC	Lake	(352) 241-9173	HZ, P
Environmental Remediation Services	Duval	(800) 718-5598	HZ, P, Hg
Environmental Research and Restoration	Broward	(954) 989-3322	HZ, P, X, Hg
EnviroTrac Ltd.	Hillsborough	(813) 626-8443	P
E. Q. Florida	Hillsborough	(800) 624-5302	HZ, P, Hg
Express Commercial, Inc.	Volusia	(386) 804-2160	P, Hg
FCC Environmental	Broward	(800) 235-0189	HZ, P, Hg
FCC Environmental	Orange	(800) 235-0189	HZ, P, Hg
FCC Environmental	St. Lucie	(800) 235-0189	HZ, P, Hg
Florida Environmental Compliance Corporation	Duval	(904) 731-8959	P, Hg
Florida Environmental Regulation Specialists, Inc. (FER)	Charlotte	(800) 761-3777	HZ, P
Florida Environmental Regulation Specialists, Inc. (FER)	Lake	(800) 761-3777	HZ, P
Florida Environmental Regulation Specialists, Inc. (FER)	Orange	(800) 761-3777	HZ, P
Florida Environmental Regulation Specialists, Inc. (FER)	Alachua	(800) 761-3777	HZ, P
Florida Environmental Regulation Specialists, Inc. (FER)	Seminole	(800) 761-3777	HZ, P
Florida Environmental Regulation Specialists, Inc. (FER)	Volusia	(800) 761-3777	HZ, P
Handex Consulting & Remediation	Palm Beach	(561) 243-9551	HZ, P
Handex Consulting & Remediation	Hillsborough	(813) 626-4646	HZ, P
Handex Consulting & Remediation	Lake	(352) 735-1800	HZ, P
Handex Consulting & Remediation	Miami-Dade	(305) 231-1971	HZ, P
Handex Consulting & Remediation	Leon	(850) 878-0813	HZ, P
HEPACO, Inc.	Clay	(800) 888-7689	HZ, P, X, R, Hg
Hoffer & Associates	Charlotte	(941) 628-0205	HZ, P, R
Howco Environmental Services	Pinellas	(727) 327-8467	HZ, P
Incident Management Solutions, Inc.	Lake	(321) 228-2334	HZ, P
Jacksonville Pollution Control, Inc.	Duval	(904) 355-4164	P
Jamson Environmental, Inc.	Hillsborough	(813) 986-3310	HZ, P, R, Hg
Land Renovations, Inc.	Broward	(954) 683-8977	HZ, P
Landmark Consulting, Inc.	Broward	(954) 288-6510	HZ, P

Marine Industrial Services, Inc.	Duval	(800) 404-1062	P
Moran Environmental Recovery, Inc.	Duval	(800) 359-3740	Hx, P, X, R, Hg
On-Time Environmental Services	Hillsborough	(888) 755-0554	Hx, P
Petroleum World, Inc.	Broward	(954) 581-4455	Hx, P, Hg
Petroleum Technicians, Inc.	Volusia	(800) 537-9383	P
Petrotech Southeast, Inc.	Orange	(800) 293-1743	Hx, P
Ragin Cajun	Palm Beach	(561) 346-5866	Hx, P
Raider Environmental	Broward	(954) 316-0633	Hx, P
Reactive Explosive Materials Training Group	Polk	(800) 736-8295	Hx, R, X, Hg
Shaw Environmental	Lake	(800) 537-9540	Hx, P, Hg
Shaw Environmental	Dade	(800) 537-9540	Hx, P, Hg
Soil Remediation, Inc. (SRI)	Lowndes, Georgia	(800) 215-7066	P
SWS Environmental First Response	Bay	(800) 852-8878	Hx, P, X, R, Hg
SWS Environmental First Response	Broward	(800) 852-8878	Hx, P, X, R, Hg
SWS Environmental First Response	Escambia	(800) 852-8878	Hx, P, X, R, Hg
SWS Environmental First Response	Hillsborough	(800) 852-8878	Hx, P, X, R, Hg
SWS Environmental First Response	Lee	(800) 852-8878	Hx, P, X, R, Hg
SWS Environmental First Response	Orange	(800) 852-8878	Hx, P, X, R, Hg
SWS Environmental First Response	Pinellas	(800) 852-8878	Hx, P, X, R, Hg
SWS Environmental First Response	Polk	(800) 852-8878	Hx, P, X, R, Hg
Warren Environmental, Inc.	Suwannee	(386) 935-0650	Hx, P
WRS Infrastructure & Environment, Inc.	Hillsborough	(813) 620-1432	Hx, P, X, R, Hg

Key for above response contractors: Hx-Hazardous Materials, P-Petroleum, X-Explosives, R-Radioactive, Hg-Mercury

3/6/09

Additional Resource Contacts for Freeway Incidents

Airports

Bradenton/Sarasota Charlotte Co. Air Authority Federal FAA	6000 Airport Circle 28000 A-1 Airport Rd	6a-10p M-F8a-4p	941-359-2770 941-639-4119 813-992-7433
Page Field Aviation Center Southwest Florida Int. St. Pete Flight Service Station	501 Danley Dr 16000 Chamberlin Pkwy	24 Hrs	239-936-1443 239-768-1000 800-992-7433
Venice Municipal Airport	150 Airport Ave. E		941-486-2711

Ambulances

A ACLS Advanced Air Ambulance AAAEMS Air Ambulance by Air Trek Inc			800-633-3590 800-558-5387 800-633-5387
Air Ambulance Central Air Ambulance Network Ambitrans			800-468-6282 800-327-1966 941-485-8111
Ambu-Van Lee County EMS West Coast Ambulance West Coast Medical			941-358-1959 239-337-2000/9-1-1 941-748-7148 941-925-7192

American Red Cross

American Red Cross - Charlotte County Chapter American Red Cross - Collier County American Red Cross - Lee County Chapter			941-629-4345 239-596-6868 239-278-3401
American Red Cross - Manatee County American Red Cross - Port Charlotte American Red Cross - Sarasota County			941-792-8686 941-629-4345 941-379-9300
American Red Cross - Venice			941-486-8402

Animal Control, Treatment and Disposal Contacts

Absolute Wildlife Control		239-699-4020
Action Animal Trappers		239-454-2727
Charlotte County Animal Control	8:00 AM – 7:00 PM Mon – Sat	941-764-4320
Collier County Domestic Animal Services	Business Hours Mon–Sat	239-252-7387
Clinic for the Rehabilitation of Wildlife (CROW)	Sanibel	239-472-3644
Critter Control of Ft. Myers		239-731-6255
Critter Control of Sarasota		941-355-9511
Dames Animal Arrest & Pest Control INO Naples		239-775-8855
Lee County Animal Services		239-533-7387
Manatee County Animal Control		941-742-5933
Nuisance Wildlife Relocation Sarasota Co		941-729-2103
Sarasota County Animal Services	9:00 AM – 4:30 PM Mon – Fri	
941-861-9500		
Scott's Animal Services	Ft. Myers	239-560-7795
Wildlife Center of Venice	Venice	941-484-9657
Wildlife, Inc	Anna Maria Island	941-778-6324

Animals – Large Animal Removal and Disposal

Alligator Removal, Fish and Wildlife Conservation Commission	24 Hour	866-392-4286
SWS Environmental First Response (Disposal)		800-852-8878

Animals – Large Animal Rescue by County

Charlotte County Animal Control	8:00 AM – 5:00 PM Mon – Sat	941-833-5690
	After Hours – Charlotte County Sheriff	941-639-2101
Collier County Domestic Animal Services	Business Hours Mon – Sat	239-252-7387
	After Hours – Collier County Sheriff	239-252-9300
Lee County Sheriff		239-477-1000
Manatee County Sheriff	Ext 1159	941-747-3011
Sarasota County Animal Services	8:00 AM – 4:30 PM Mon – Fri	941-861-9500
	After Hours – Sarasota County Sheriff	941-861-4081

Barrier Wall, Pre-cast

ABC Barricade Company 17405 Jean St Ft. Myers 239-437-1333

Bridges

Albee/Casey Key 941-486-2747
Anna Maria

Blackburn Point 941-486-2750
Boca Grande Causeway/Bridge 941-697-2271
Casey Key/Albee 941-486-2747

Circus Bridge/South Venice 941-497-7101
Cortez
Gasparilla Island Bridge Authority 941-697-2271

Hatchet Creek 941-483-3597
Longboat Key
Manasota 941-474-1663

New Pass 941-373-7324
Siesta Key 941-955-7577
South Venice

Stickney Point 941-927-3619
Sunshine Skyway Bridge North Toll Plaza (southbound traffic) 727-893-2764
Sunshine Skyway Bridge South Toll Plaza (northbound traffic) 941-723-4525

Tom Adams 941-474-1889
Venice Ave 941-486-2743

Bridge Damage Inspection

For more information see the FDOT section

FDOT Bridge Maintenance
ICA 866-335-9696

Sarasota City Road and Bridge 941-365-7871 after hrs 941-954-4148

Sarasota County Road and Bridge M-F 8:00AM TO 4:00PM 941-861-0800

Buses

America Charters			239-437-6717
American Coach Lines			239-334-4070
Greyhound			800-231-2222
MBI Charters Bus			800-780-3235
			239-643-7575
NT&T Transportation Services			800-592-0848

Compressors (Air)

AA Generator & Pump Inc	2082 Beacon Manor	Fort Myers	239-332-1136
ASAP Equipment Rental and Sales		Punta Gorda	941-575-6909
Bob Dean Supply Inc			800-282-8378
Ingersoll Rand – Rotary	2624 Hanson St	Fort Myers	800-282-8378
Comp Air Service		Fort Myers	800-229-2667
Comp-Air Service Co		Naples	239-332-0655
Compressed Air Systems Inc			800-626-8177
Corey Compressor Inc			239-693-3430
Gulf Atlantic Equipment Co Inc			800-329-4853
Harbor Freight Tools	9131 College Pkwy	Fort Myers	239-415-8808
Air Centers of Florida Inc	9311 Solar Dr	Tampa	800-282-5359
Thadds on the Spot	5625 Youngquist Rd	Fort Myers	239-226-0995

Concrete Cutting and Breaking

Abash Enterprises Inc		Fort Myers Port Charlotte	239-693-8003 941-743-0550
Cougar Cutting Inc	6391 Arc Way	Fort Myers	239-275-9334
Hi Tec Concrete Inc		Lehigh Acres	239-931-1100
Firestop Coredrill Inc		Estero	239-498-2801
Thomas Machinery Inc	5550 Shirley St	Naples	877-433-4808

County Departments and Agencies

See Government Agencies – County

Cranes and Heavy

Lifting Equipment

Gordon Crane Co			239-281-3030
Gulf Coast Crane Rental	5740 Zip Dr	Fort Myers	239-433-1116
Keesling Construction			941-639-3166

Crisis Prevention/Treatment

Abuse Counseling & Treatment Inc	24 Hr Hotline	239-939-3112
Coastal Recovery-daytime only – Switchboard		941-927-8900
Coastal Adult Hot Line – 24 hours		941-364-9355
Coastal Family Hot Line – 24 hours	Ext 1125	941-952-1147
Coastal Children and Adolescents Hot Line – 24 hours		941-308-2242
Safe Place & Rape Crisis Center (SPARCC)		941-365-1976
Youth Crisis Hotline		800-442-HOPE

Dumpsters and Hoppers

Allied Recycling Inc	3770 Palmetto Ave	Fort Myers	239-334-1191
			239-332-7766
Buster's U-Call		N Fort Myers	239-997-4184
City of Fort Myers Solid Waste Division	2925 Dr. Martin Luther King Blvd		239-321-8050
County Waste Inc	Ft Myers/Bonita Springs		239-481-3400
	Naples/ Marco Island		866-690-3400
ESP Management		Naples	239-566-3628
G E Construction Clean Up Inc	917 Willard Ave	Lehigh Acres	239-368-7288
Gruelle Construction Inc		Fort Myers	239-454-3080
Onyx Waste Services	17101 Pine Ridge Rd	Ft Myers	239-334-1224
Rock Solid Hauling & Clean Up		Ft Myers	239-634-3236
Soon Come Contract Hauling Inc	460 Elizabeth Rd	Sanibel	239-395-8700
Waste Management	23046 Harborview	Port Charlotte	941-629-1106
Waste Management/Gulf Disposal	11990 SR 82 East		239-334-4115
Waste Services	2289 Bruner Ln	Ft Myers	239-643-6060
			239-489-1716
			239-226-4040

Emergency Management Agencies

American Red Cross - Charlotte County Chapter		941-629-4345
American Red Cross - Collier County		239-596-6868
American Red Cross - Lee County Chapter		239-278-3401
American Red Cross - Manatee County		941-792-8686
American Red Cross - Port Charlotte		941-629-4345
American Red Cross - Sarasota County		941-379-9300
American Red Cross - Venice		941-486-8402
Broward County Emergency Management Center		954-831-3900
Broward County Fire Rescue		954-831-8200
Cape Coral Emergency Operations Center		239-573-3000
Charlotte County Emergency Management Center		941-833-4000
Collier County Emergency Management Center		239-252-3600
Environmental Protection Services Nat'l Hotline Press 1 for Chem/Haz-Mat		800-424-8802
Federal Emergency Management Agency		800-462-9029
Florida Dept of Environmental Protection Bureau of Emergency Response		813-632-7641
Florida Emergency Information Hotline		800-342-3557
Florida Poison Information Center		800-282-3171
Gulf Coast Humane Society	Ft Myers	239-332-0364
Lee County Animal Services		239-533-7387
Lee County Emergency Medical Services		239-335-1600
		9-1-1
Lee County Emergency Management	Business	239-533-3622
	Emergency	239-337-2000
Lee County Health Department		239-332-9501
Lee County Warning Point		239-337-2000
Manatee County EOC		941-749-3500
Miami-Dade Emergency Management Center		305-468-5400
National Response Center Toxic/Chemical Emergencies		800-424-8802
Palm Beach County Emergency Management Center		561-712-6400
Poison Control		800-222-1222
Salvation Army – Fort Myers		239-278-1551
Sarasota County Emergency Management	M-F 8-5	941-861-5000
	After Hours	941-861-5988
General Info Line for Public during disaster		941-861-4636
State Emergency Operations Center	ESF 1 & 3	850-921-0184
State Watch Office		800-320-0519
Storm Information Hotline (SIHL)	When Activated	239-477-1900

Explosives

Assn of American Railroads/Haz-Mat – Explosives 24 hours			202-639-2222
Sarasota County (Special Operations)			941-861-5000
USA Environmental, Inc.	720 Brooker Creek Blvd	Oldsmar	813-343-6337

Fire Marshal

State Fire Marshal			813-890-1904
		After hours	800-638-4373

Fire Rescue Departments

	Station/Admin	Emergency/Dispatch
Alva	239-728-2223	9-1-1
Bayshore	239-543-3443	9-1-1
Boca Grande	941-964-2908	9-1-1
Bonita Springs	239-949-6200	239-337-2000 / 9-1-1
Bradenton	941-708-6233	941-749-1111 / 1112
Cape Coral	239-949-6200	9-1-1
Captiva	239-242-3301	9-1-1
Cedar Hammock	941-751-7090	941-748-2222 / 2246
Charlotte 9-1-1 CSO	941-474-3233	941-474-3233
Charlotte Co Fire/EMS	941-743-1367	9-1-1
Charlotte CSO direct to EMS		941-639-0013
Desoto County	863-993-4700	863-993-4842
East Manatee	941-751-5611	941-748-2222 / 2246
Englewood	941-474-3311	941-861-5988
Estero	239-390-8000	239-337-2000 / 9-1-1
Forestry		941-751-7627 / 7629
Fort Myers Station One	239-321-7311	239-337-2000 / 9-1-1
Shift Command	239-321-7323	
Shift Command Cell	239-851-5604	
Fort Myers Beach	239-463-6164 / 6163	9-1-1
Fort Myers Shores	239-694-2833	9-1-1
Golden Gate	239-348-7540	239-207-4421 / 9-1-1
Hillsborough Fire		813-681-9927
Iona-McGregor	239-433-0660	9-1-1
Lee County EMS	239-533-3911	239-337-2000 / 9-1-1

Lehigh Acres	239-344-1600	9-1-1
Longboat Key Dispatch		941-316-1977
Manatee ECC		941-748-2222 / 747-7776
Manatee County		941-748-2222 / 2246
Matlacha-Pine Island	239-283-0030	9-1-1
Myakka City	941-322-2292	941-748-2222 / 2246
Nokomis	941-488-8855	941-861-5988 or 9-1-1
North Fort Myers	239-997-8654	9-1-1
North Naples	239-597-3222	239-913-7146 / 9-1-1
North Port	941-240-8150	941-861-5988 / 9-1-1
North River	941-721-6700	9-1-1
Ochopee	M – F, 8a – 5p	9-1-1
	Weekends	239-695-2902
Port Authority Airport ARFF	239-590-4566	
Punta Gorda	941-575-5529	9-1-1
San Carlos Park	239-267-7525	239-337-2000 / 9-1-1
Sanibel	239-472-5525	9-1-1
Sarasota Airport CFR	359-5048 fax	941-359-5911
Sarasota County	941-861-5300	941-861-5988
South Manatee	941-751-7675	941-748-2222 / 2246
South Trail	239-433-0080	9-1-1
State Division of Forestry	239-690-3500	9-1-1
Tampa		813-232-6802 / 6805
Tice	239-694-2380	9-1-1
Upper Captiva	239-472-8899	9-1-1
Useppa Island	239-283-7578	9-1-1
Venice	941-480-3030	941-861-5941
West Manatee	941-741-3900	9-1-1

Generators (Large)

AA Generator & Pump Inc	2082 Beacon Manor	Ft Myers	800-441-0906
Cummins Southeast Power Inc	2671 Edison Ave	Ft Myers	239-337-1211
Florida Detroit Diesel/Allison Inc	2305 Rockfill Rd	Ft Myers	239-332-3100 800-812-4440
Flint Power Systems			800-821-4025
Metro Diesel Power Inc	3450 Metro Pkwy	Ft Myers	239-337-1311
Pantropic Power Inc	9650 Kelly Tractor Dr	Ft Myers	239-337-4222
Caterpillar Rental Generator			800-237-2945
Rental City	14361 N Cleveland Ave	Ft Myers	239-856-0025
Superior Power Equipment Co	5836 Enterprise Pkwy	Ft Myers	239-768-5559 239-768-6310

Government Agencies – County

Charlotte County

Department of Transit			941-575-4000
Hazardous Waste			941-764-4380
Health Unit			941-639-1181

Road and Bridge			941-575-3635
Sheriff's Office			941-639-2101
Sheriff's Office Communications			941-575-5330

Collier County

Collier County Roadway Maintenance	4800 Davis Blvd	Naples	239-252-8924
Collier County Sheriff			239-252-9300 *CCSO (*2276)
Collier County Traffic Management Center			239-252-5000

Lee County

Lee Control			239-337-2000
Lee County DOT			239-533-9500
Lee County DOT Traffic Operations			239-533-9500

Lee County DOT Traffic Signals			239-335-2852
Lee County DOT Sign Shop			239-533-9500
Lee County Emergency Management	Business		239-533-3622
	After Hrs/Emergency		239-337-2000

Lee County Sheriff			239-477-1000
Lee County Transit (LeeTran)			*LCSO (*5276) 239-533-8726

Manatee County

Community Services Department

Transit Division/MCAT	Administration	941-747-8621
Health Department		941-748-0747
Medical Examiner District Twelve	Sarasota Number	941-361-6909

Public Information Office **941-742-5800**

Public Safety Department

Animal Control	Palmetto	941-742-5933
Emergency Communication Center	Non emergency	941-747-3011
Administrative Calls Administrative Complex		941-748-4501
Emergency Management		941-749-3500
Emergency Medical Services		941-749-3500

Sheriff's Office

Administrative Offices	941-747-3011
Transit Division (Community Services)	941-747-8621

Public Works Department

Administration	941-708-7480
Engineering	941-708-7462
Fleet Services	941-708-7458
Highway Maintenance	941-708-7497
Traffic Sign/ Signals	941-708-7510

School Board of Manatee

Educational Programs	941-708-8770
-----------------------------	---------------------

Sarasota County

Animal Services	941-861-9500
Environmental Health (HSBC)	941-861-6133
Hazardous Waste (ESBC)	941-861-5000

Natural Resources/Pollution Control (ESBC)	941-861-5000
Resources Protection (DSBC)	941-861-5000

Sheriff's Office	Main Line	941-365-8247
Solid Waste (ESBC)		941-861-5000
Traffic Problems		941-861-5000

DOT Sarasota County	941-861-9500
Road and Bridge – County	941-861-9500

Public Works	941-861-9500
---------------------	---------------------

Ed Smith Stadium	941-954-4101
EMS/First Aid	Ext 5245 941-954-4101

Electrician – City – All hours	941-861-9500
---------------------------------------	---------------------

Government Agencies – Federal

Office of Motor Carriers (FHWA)		Tallahassee	850-942-9338
Federal Highway Administration (FHWA)			
Florida Division Office		Primary	850-553-2200
Federal Aviation Administration (FAA)		Regional Office	407-812-6331
National Transportation Safety Board (NTSB)		D.C.	202-314-6000
		Miami	305-597-4600
Federal Emergency Management Agency			800-621-3362
Washington D.C.		24 Hr	202-646-2500
Federal Communications Commission (FCC)			888-225-5322
US Coast Guard			
SAR Station		Fort Myers Beach	239-463-6754
Marine Safety Office	Ext 8 Emergencies	Cortez	813-228-2191
Marine Safety Office	Haz-Mat Spills	Cortez	800-424-8802
		St Petersburg	727-824-7670
Marine Safety Office	Haz-Mat Spills	Ft Myers	239-985-0560
		Sarasota	941-794-1607
			941-371-8992
US Army Corps of Engineers		Fort Myers	239-334-1975
US Nuclear Regulatory Commission			301-492-7000
US Department of Energy		Hotline	800-472-2756
US Environmental Protection Agency			202-564-4700
US Postal Service			800-275-8777
Federal Bureau of Investigation (FBI)	500 Zack Street, Suite 610 Tampa		813-273-4566
US Customs & Border Protection			
Field Operations Office		Miami	305-810-5120
Press Office		Miami	800-973-2867
Port of Entry		Ft. Myers	239-561-6205
Port of Entry		Port Manatee	941-729-9301
Service Port		Area Port of Tampa	813-228-2385
U. S. Secret Service		Ft. Myers	239-334-0660
		Tampa	813-228-2636
Alcohol Tobacco and Firearms (ATF)		Fort Myers	239-278-7195
		Tampa	813-202-7300
Drug Enforcement Administration (DEA)		Fort Myers	239-275-3662
US Marshal			800-336-0102
US Citizenship and Immigration Services –			
National Customer Service Center			800-375-5283
		Miami	305-530-6074

Fish and Wildlife Service (US)		800-432-2046
National Hurricane Center	24 Hour	305-229-4470
National Weather Service	Tampa Bay Area	813-645-2506
	Miami	305-229-4522
US Postal Service	Postal Inspectors	Miramar
National Flood Insurance Program		954-436-7200
		813-788-2624
Bureau of Explosives		
(Rail car emergencies)	Washington D.C.	24 hour
This is a quasi-public agency, experts in explosives and the handling of Hazardous Materials emergencies.		202-639-2222

Government Agencies – Municipal

Bradenton, City of		
Fire Department	Administration	941-708-6233
		9-1-1
Police Department		941-708-9300
		9-1-1
Public Works		941-708-6300
Fort Myers, City of		
Fire Rescue		239-321-7311
		9-1-1
Police Department		239-321-7700
		9-1-1
Sarasota, City of		
Barricades Day		941-365-7871
Barricades Night		941-954-4148
Ed Smith Stadium		941-954-4101
Ed Smith Stadium EMS / First Aid	Ext 5245	941-954-4101
Public Works M-F 8-5		941-954-4198
Public Works After hours		941-954-4148
Road and Bridge		941-365-7871
Road and Bridge after hours		941-954-4148
Sewer and Garbage		941-365-7651
Solid Waste		941-365-7651
Waste Water		941-955-2325
Water Department Days		941-955-2325
Water Department 24 hours		941-955-4838

Government Agencies – State

Florida Department of Environmental Protection		
Bureau of Emergency Response		239-344-5600
HazMat/Criminal Emergency Notification (SWO – 24 hr)		800-320-0519
South District Regulatory Programs		239-344-5600
Florida Department of Transportation		
SWIFT Center RTMC	Ft. Myers	239-225-9800
District Office	Bartow	863-519-2300
Southwest Area Office	Ft. Myers	239-461-4300
Ft. Myers Operations Center		239-656-7800
Sarasota Operations Center		941-359-7300
FDOT I-75 Maintenance - Bridges (ICA)		
Collier, Lee, Charlotte, Sarasota, and Manatee Counties		866-335-9696
FDOT I-75 Maintenance (DBI)		
Collier, Lee, Charlotte, Sarasota, and Manatee Counties		239 479-7700
FDOT Motor Carrier Compliance		239-225-9600
Florida Division of Forestry	Collier Lee	239-690-3502
Florida Division of Forestry	Charlotte Sarasota Manatee	941-575-5737
Florida Highway Patrol Troop F Dispatch		239-344-1701
Florida National Guard		850-656-2031
Fish and Wildlife Conservation Commission Law Enforcement	Ft Myers	239-332-6972
Florida Game and Fresh Water Fish Commission		800-529-9028
Road Rangers (Call SWIFT Center RTMC)		239-225-9860
Southwest Florida Water Management District		813-985-7481
State EOC ESF 1 & 3		850-921-0184
State Fire Marshal		850-422-3170
State Watch Office	Emergency Response	800-320-0519
State Watch Office	Non Emergency	850-413-9900
Department of Agriculture	Tallahassee	850-488-3314
Department of Corrections	Tampa	813-272-2497
Department of Health	Sarasota	941-361-6250
Civil Air Patrol	Naples	239-643-2226
	Punta Gorda	941-639-1711

Helicopters

Advanced Air Ambulance			800-633-3590
AEROMED			863-655-6030
Air Ambulance Central			305-662-4006
Air Trek Inc			941-639-7855
Bayflite			800-223-4494
Russell Kilpatrick Helicopters		SW Florida	863-946-1700
Lee County EMS/MEDSTAR			239-337-2000
London Helicopters	100 Aviation Dr S	Naples	239-643-4468
O'Brien Helicopters	32 Calvin Ave	Lehigh Acres	239-368-4910
Florida Highway Patrol		Fort Myers	239-278-7100
Coast Guard	Rescue Coordinating Center		941-366-5595
US Air Force	Rescue Coordinating Center		800-851-3051
Air Ambulance America	Private Medical Transport		800-262-8526
National Air Ambulance	Private Medical Transport		800-327-3710

Hospitals

	Business	Emergency
All Children's 501 6 th St S, St. Petersburg	800-456-4543	
Bay Pines VAMedical Center 10000 Bay Pines Blvd, St Petersburg	727-398-6661	
Bayfront Medical Center 701 6 th St S, St Petersburg 33701	727-893-1234	727-893-6100
Blake Memorial 2020 59 th St W, Bradenton	941-792-6611	941-798-6300
Cape Coral Hospital	239-574-2323	239-574-0354
Charlotte Regional Medical Center	941-639-3131	
Doctors Hospital of Sarasota 5731 Bee Ridge Rd	941-342-1100	941-342-1024
Englewood Community 700 Medical Blvd, Englewood	941-475-6571	941-473-5028
Fawcett Memorial Hospital 21298 Olean Blvd, Port Charlotte	941-629-1181	941-629-0206
First Step 1726 18 th St., Sarasota	941-366-5333	800-266-6866
Gulf Coast Hospital	239-343-1000	
Health Park Medical Center 9981 S. Healthpark Dr., Ft. Myers	239-433-7799	239-432-3334
Kindred Hospital Bay Area 3030 6 th ST, St Petersburg	727-894-8719	
Lee Memorial Hospital 2776 Cleveland Ave, Ft Myers	239-332-1111	239-334-5334
Lehigh Regional Medical Center 1500 Lee Blvd, Lehigh Acres	239-369-2101	239-369-3800
Manatee Memorial ER 206 2 nd St E, Bradenton	941-746-5111	941-745-7466
Miami Children's Hospital 3100 SW 62 nd Ave Miami	800-432-6837	

Naples Community Hospital Downtown 350 Seventh St. North	239-436-5000	
North Collier Hospital 11190 Health Park Blvd, Naples	239-513-7000	
Peace River Regional Medical Center 2500 Harbor Blvd, Port Charlotte	941-766-4122	941-766-4255
Physicians Regional 8300 Collier Blvd	239-354-6000	
Physicians Regional 6101 Pine Ridge Road	239-348-4000	
Sarasota Memorial 1700 S Tamiami Trail	941-917-9000	
Tampa General 1 Tampa General Circle	813-844-7000	
Tampa St Joseph's Hospital	813-870-4000	
Venice Hospital 540 The Rialto, Venice	941-485-7711	941-483-7000
Wauchula Hospital 533 W. Carlton St., Wauchula 33873	863-773-3101	863-767-8270
Willough at Naples 9001 Tamiami Tr E, Naples	800-722-0100	

Hotels and Motels (Sarasota County)

All Area Code 941

HOTELS/MOTELS	Address	Phone
AmericInn Hotels & Suites	5931 Fruitville Road	342-8778
A Beach Retreat	105 Casey Rd, Nokomis	485-8771
Allamanda Hotel	4014 Tamiami Tr N	355-4764
Azure Tides Resort	1330 Ben Franklin Dr	388-2101
Banana Bay Club Beachside	1105 Point of Rocks Rd	349-4444
Bay Breeze Motel	340 Tamiami Tr S, Venice	488-4417
Beach Place	5605 Avenida Del Mare	346-1745
Bentleys Resort Hotel	1660 Tamiami Tr S	966-2121
Best Western-Midtown	1425 Tamiami Tr S	955-9841
Best Western-Royal Palms Motel	1701 Tamiami Tr N	365-1342
Best Western-Sandbar Beach Resort	811 The Esplanade N	488-2251
Cabana Inn	2525 Tamiami Tr S	955-0195
Cadillac Motel	4021 Tamiami Tr N	355-7108
Capri at Siesta	6782 Sarasea Ci	684-3244
Captiva Beach Resort	6772 Sarasea Ci	349-4131
Cavalier Motor Inn	3916 Tamiami Tr N	355-2701
Coastwood Motel	2309 Tamiami Tr N	957-0338
Comfort Inn	5778 Clark Rd	921-7750
Comfort Inn-Airport	4800 Tamiami Tr N	355-7091
Conclare Seaside Apartments	6738 Sarasea Cir	349-2322
Conclare Seaside Apts	6738 Sarasea Ci	349-2322
Coquina on the Beach	1008 Ben Franklin Dr	388-2141
Country Inn & Suites	5730 Gantt Road	925-0631
Courtyard by Marriott	850 University Pkwy	355-3337
Crescent Towers	1035 Seaside Dr	349-2100
Crescent View Beach Club Hotel	6512 Midnight Pass Rd	349-2000
Days Inn	1710 S Tamiami Tr, Venice	493-4558
Days Inn Motel	4900 Tamiami Tr N	355-9721
Days Inn Sarasota @ I-75	5774 Clark Rd	921-7812
Downtown Motel	600 Washington Bl N	365-3640
Englewood Bay Motel & Apts	69 W. Bay St, Englewood	475-1769
Family Inn	4807 N Tamiami Tr	355-5247
Family Inn	4807 Tamiami Tr N	355-5247
Flamingo Colony Motel	4703 Tamiami Tr N	355-5135

Golden Host Resort	4675 Tamiami Tr N	355-5141
Gulf Beach Resort	930 Ben Franklin Dr	388-2127
Gulf Sands Beach Resort	433 Casey Key Rd, Nokomis	488-7272
Gulf Shore Resort Motel	317 Casey Key Rd, Nokomis	488-6210
Gulf Side Motel	138 Garfield Dr	388-2590
Gulf Surf Resort	3905 Casey Key Rd	966-2669
Gulf Tide Motel	708 Granada Av, Venice	484-9709
Gulf to Bay Club	113 Casey Key Rd, Nokomis	485-7875
Hampton Inn	975 University Pkwy.	355-8140
Helmsley Sandcastle	1540 Benjamin Franklin Dr	388-2181
Hilton Garden Inn	8270 N Tamiami Trl	552-1100
Historic El Patio Motor Hotel	229 W Venice Av, Venice	488-7702
Holiday House	455 US 41 Bypass N	485-5411
Holiday Inn-Downtown	1 Tamiami Tr N	365-1900
Holiday Inn-Express Siesta Key	6600 Tamiami Tr S	924-4900
Holiday Inn-Lido Beach	233 Ben Franklin Dr	388-5555
Howard Johnson	811 Tamiami Tr S	365-0350
Howard Johnson	811 Tamiami Tr S	365-0350
Hyatt Regency	1000 Boulevard of the Arts	953-1234
Inn at the Beach Resort	725 W Venice Av, Venice	484-8471
Island Breeze Inn	340 Tamiami Tr S, Venice	488-4417
Island House Apt Motel	205 Casey Key Rd, Venice	488-1719
Knights Inn	5340 Tamiami Tr N	355-8867
Kon-Tiki Motel	1487 Tamiami Tr S	485-9696
LaQuinta Inn & Suites	1803 Tamiami Tr N	366-5128
Laurel Villa Motel	1409 N Tamiami Tr, Nokomis	484-3656
Lido Beach Resort	700 Ben Franklin Dr	388-2161
Lido Dorset	475 Ben Franklin Dr	388-1404
Lido Islander	528 Polk Dr S	388-1004
Lido Surf & Sand	1100 Ben Franklin Dr	388-1100
Lime Tree Beach Resort	1050 Ben Franklin Dr	388-2111
Monterey Village	2413 Tamiami Tr N	953-6044
Nokomis Inn & Suites	119 Tamiami Tr N	488-1155
Regency Inn & Suites	4200 Tamiami Tr N	355-7616
Residence Inn by Marriott	1040 University Pkwy	358-1468
Ritz Carlton	1111 Ritz Carlton Dr	309-2000

Sarasota Sands Motel	2150 Ben Franklin Dr	388-2138
Sea Spray Resort	574 Canal Rd	232-5738
Siesta Beach Resort and Suites	5311 Ocean Bl	349-3211
Siesta Sands on the Beach	118 Beach Rd	349-1929
Siesta Sun Beach Villas	6424 Midnight Pass Rd	349-8233
Sleep Inn	900 University Py	359-8558
Southland Inn	2229 Tamiami Tr N	954-5775
Suburban Extended Stay Hotel	7251 Tamiami Tr N	355-7747
Sun & Surf Colony	1148 Ben Franklin Dr	388-2513
Sundial Motor Inn	4108 Tamiami Tr N	351-4919
Suntan Terrace Beach Motel	117 Casey Key Rd S, Venice	488-1565
Suntide Island Beach Club	850 Ben Franklin Dr	388-2151
Super 8 Motel	4309 Tamiami Tr N	355-9326
Surfview Motel Sarasota	1121 Benjamin Franklin Dr	388-1814
Tides Inn Motel	1800 Stickney Point Rd	924-7541
Tropical Breeze Resort	140 Columbus Bl	349-1125
Tropical Shores Beach Resort	6717 Sarasea Cir, Siesta Key	349-3244
Venice Beach Villas	501 Venice Av W	488-1580
Veranda Inn & Café	625 Tamiami Tr S, Venice	484-9559
West Wind Apts	704 Casey Key Rd S, Venice	488-2508
Wishing Well Beach to Bay Resort	221 Casey Key Rd, Venice	488-5011

Hydraulic Equipment Repair

Auto Hydraulics	202 Wallace Ave N	Lehigh Acres	239-369-5859
B & B Hydraulics	5890 Shirley St	Ft Myers	239-566-1403
Consolidated Waste System	2115 Central Ave	Ft Myers	239-332-0810
D&D Machine & Hydraulics Inc	10945 Metro Pkwy	Ft Myers	239-275-7177
Florida Hydraulics	3454 Metro Pkwy	Ft Myers	239-332-4033
Florida Spring & Axle Service	2335 Rockfill Rd	Ft Myers	239-332-4222
Hydraulic Service & Sales Inc	4445 Hancock Bridge Pkwy N	Ft Myers	239-995-2330

Law Enforcement Agencies

	Business	Emergency
Bradenton Beach Police	941-778-6311	941-748-2222
Bradenton Police	941-708-6273	941-748-2222
Broward County Sheriff		
BSO Duty Officer	954-765-4321	
Communications	954-767-8740	
Bomb and Arson	954-831-8360	
Special Operations	954-321-4263	
Helicopters	954-938-0650	
Bureau of Alcoholic Beverages & Tobacco	850-487-1395	
Cape Coral Police Department	239-574-3223	9-1-1
Charlotte County Sheriff's Department	941-639-2101	9-1-1
Collier County Sheriff	239-252-9300	
Desoto Sheriff's Office	863-993-4700	
Federal Bureau of Investigation	239-337-7171	813-273-4566
Florida Department of Environmental Protection		
Criminal Investigations	800-320-0519	
Florida Highway Patrol		
Arcadia	863-993-4618	
Bradenton	941-751-7647	Press 0 for emergency
Ft Myers	239-344-1701	
Lee County	239-278-7100	9-1-1
Naples	239-354-2377	
Venice	941-483-5911	
Florida Division of Forestry		
Collier and Lee Counties	239-690-3500	239-690-3500
Charlotte, Sarasota, & Manatee Co.	941-751-7627	941-751-7627
Ft Myers PD	239-321-7700	9-1-1
Holmes Beach PD	941-708-5804	941-748-2222
Lee County Sheriff's Office (Main)	239-477-1000	9-1-1
Bonita Springs (South District)	239-477-1840	9-1-1
Fort Myers Beach, Town of	239-477-1830	9-1-1
Gulf (Island Coastal)	941-964-2400	9-1-1
North District	239-477-1810	9-1-1
East District	239-477-1820	9-1-1
West District	239-477-1830	9-1-1

Lee County Port Authority	239-590-4800	
Longboat Key PD	941-316-1977	941-748-2222
Manatee County Sheriff's Office	941-747-3011	941-748-2222
Miccosukee Police – Alligator Alley Substation	305-223-1600	
North Port PD		941-426-3111
Pinellas County Sheriff's Office		727-582-6200
Punta Gorda Police Department	941-639-4111	
Sanibel PD	239-472-3111	9-1-1
Sarasota PD	941-366-8000	941-366-1811
Sarasota Sheriff's Office	941-861-5800	941-366-1811
St Petersburg Beach PD		727-363-9200
St Petersburg PD		727-893-7780
U.S. Coast Guard	727-896-2816	
U.S. Coast Guard Bradenton	941-795-2805	
U.S. Coast Guard Fort Myers Beach	239-463-4398	
U.S. Coast Guard Sarasota	941-366-5595	
Venice PD	941-486-2444	9-1-1

Loaders, Bobcats and Forklifts

Abbott's Backhoe Services		North Venice	941-922-3215
Barloworld Handing LP	3915 N Hwy 301	Tampa	800-827-4153
Consolidated Waste System			239-332-0810
Craft Equipment Co			800-888-4971
Do-All Rentals			941-625-7110
FDOT		Ft. Myers	239-656-7800
FDOT		Sarasota	941-359-7300
Forklift & Hydraulic Repair	18350 Paulson Dr	Pt Charlotte	941-255-9854
Fort Myers Forklift Inc	2049 Towles St	Ft Myers	239-337-2117
Georgia Material Handing Inc	366 Parkway Ct	Ft Myers	239-433-9660
Gulf Atlantic Material Handling Inc	11759 S Cleveland Ave	Ft Myers	239-936-0330
Hertz Equipment Rental Corp	2401 Airport Rd	Ft Myers	239-936-2700
King Excavating		Pt Charlotte	941-625-9550
Nationwide Lift Trucks Inc	6321 Arc Way	Ft Myers	239-275-5300
Rental City	14361 N Cleveland Ave	Ft Myers	239-656-0025
Sayco Equipment Sales Inc		Ft Myers	239-344-0123
Shelving and More	2765 Fowler St	Ft Myers	239-332-1022
Toyota Industrial Equipment	6341 Arc Way	Ft Myers	239-275-0410
W E Johnson Equipment Co	2310 Rockfill Rd SE	Ft Myers	239-334-4987

Locksmith

A Beach Locksmith		239-572-1462
A Beach Locksmith	Ft Myers	239-275-8991
A to Z Lock & Key		239-454-3330
AA Quality Safe & Lock Co		
1425 Del Prado Blvd	24 Hr Emergency	S Cape Coral
		239-772-5625
Ace Locksmith & Security	Lehigh Acres	239-368-0301
Anytime Lock Key & Door	N Ft Myers	239-997-0055
		239-955-1101
Armor Locksmiths	Ft Myers Beach	239-489-2267
Ash Safe & Lock Service Inc	1469 Colonial Blvd	Ft Myers
Certified Lock & Key		Ft Myers
		239-274-8300
		239-433-2400
Edge Locksmith Services Inc		Ft Myers
Gene Taylor Locksmith		Ft Myers
Gerald's Locksmith	1383 N Tamiami Tr	Ft Myers
		239-267-0257
		239-410-0040
		239-995-4478
Larocco Locksmiths		239-434-5397
Koons John Bonded Locksmith	24 hr Emergency	
	3635 Fowler St	Ft Myers
	15881 S Tamiami Tr	
		239-936-0373
		239-489-4450
Lee Lock & Key	Ft Myers	239-278-5625
My 3 Sons Lock & Key Inc	Lehigh Acres	239-303-1980
Pop-A-Lock	Ft Myers Beach	239-463-4054
	S Ft Myers	239-489-2303
	Cape Coral	239-540-7489
	Ft Myers	239-936-4161
Unique Locksmith	Cape Coral	239-242-1045

Lumber Companies

84 Lumber Co	4231 Colonial Blvd	Ft Myers	239-936-8464
	3530 Metro Pkwy	Ft Myers	239-332-8484
Causeway Lumber Co	28280 Old 41 Rd	Bonita Springs	239-332-4277
Forest Products			941-922-0731
Home Depot 24 hours			941-377-1900
Kimal Lumber Store Hours Only			941-484-9721
Kimal Lumber After Hours Manager			941-809-0341
Naples Lumber & Supply Co Inc	3828 Radio Rd	Naples	239-643-7000
Raymond Building Supply	7751 Bayshore Rd	N Ft Myers	239-731-8300

Manpower - Temporary Labor

Coastal Staffing Services		Ft Myers	239-931-0677
		Naples	239-417-2301
Labor Finders	3814 Palm Beach Blvd	Ft Myers	239-334-1964
	3305 Bayshore Dr	Naples	239-793-5500
	4034 Washington Blvd	Sarasota	941-957-0098
Labor Ready	2201 Fowler St	Ft Myers	239-461-0008
MDT Personnel		Ft Myers	239-694-1775
		Naples	239-774-2990
		Sarasota	941-316-9500

Marine Patrol

All fuels spills in water			800-320-0519
Tampa	Dispatch for Central Florida		888-404-3922

Media

WGCU Newsroom	Mon – Fri	5:00 a.m. – 7:00 p.m.	239-590-2521
WGCU Newsroom		Fax	239-590-2520
WGCU Master Control (TV)		24/7	239-590-2371

Medical Examiner

Charlotte County	District 22	941-625-1111
Collier County	District 20	239-434-5020
Lee County	District 21	239-277-5020
Manatee County	District 12	941-361-6909
Sarasota County	District 12	941-361-6909

Mental/Medical

Bayside Center for Behavioral Health	941-917-7760
Coastal Recovery	941-364-9355

Motor Clubs – Road Service

AAA	800-222-4357
Allstate	800-347-8880
BP	800-732-9600

Photography (Aerial)

Aerial Innovations Inc			800-223-1701
Aerial Images Inc	4320 Colonial Blvd	Ft Myers	239-274-5050
Blimp Cam Aerial Photography	660 Tamiami Tr	Naples	239-263-2229
Florida Aerial Services Team			800-723-7425
London Aviation Group	100 Aviation Dr	S Naples	239-643-4468
PBS Photography Studio	3817 Kelly St	Ft Myers	239-936-8600

Pesticide Assistance

Federal: CHEMTREC Pesticide Safety Team Network		800-424-9300
Federal: EPA Pesticide Information	24 hrs	800-241-1754
Federal: National Pesticide Telecommunications Hotline	7 days 6:30am–4:30pm PST	800-858-7378
Local: Sarasota County Cooperative Services, Office		941-861-5000
State: FL Dept of Agriculture-Pesticide Section	8-5 EST	850-487-0532
State: University of FL Pesticide Regulation Information Line	8-5 EST	352-392-4721

Poison Control

National Poison Control Center Hotline	800-222-1222
Tampa General Hospital Poison Control Hotline	800-282-3171

Public Information Officers (Agency PIOs)

Broward County Fire Rescue PIO	954-831-8291
Broward County Sheriff PIO	954-831-8300

Charlotte County Fire/EMS PIO	941-743-1368
Charlotte County Sheriff PIO	941-575-5252
Collier County Sheriff PIO	239-252-9209

FDOT District 1 PIO (Sarasota, Manatee Counties)	Mon – Fri	8:00 a.m. – 5:00 p.m.	863-519-2362
		Fax	863-534-7265
		Toll Free from Southwest FL	800-292-3368
		Nights, Weekends, Holidays	863-640-1368

FDOT District 1 PIO (Collier, Lee, Charlotte Counties)	Mon – Fri	8:00 a.m. – 5:00 p.m.	941-461-4300
		Fax	941-338-2353
		Nights, Weekends, Holidays	863-608-3162

FDOT District 4 PIO (Broward, Palm Beach, Martin, St. Lucie, Indian River Counties)	954-777-4090
--	--------------

FDOT Florida's Turnpike PIO, Pompano	ext. 1289	954-975-4855
FHP PIO Troop F	ext. 117	941-751-7647
Hillsborough County Sheriff PIO		813-247-8060

Lee County Sheriff PIO	239-477-1341
Manatee County Sheriff PIO	941-747-3011

Sarasota County Fire PIO	941-861-5300
Sarasota County Sheriff PIO	941-861-5300

Public Safety Answering Points (PSAPs)

Collier County PSAP	239-252-9300
Lee County Sheriff	239-477-1000
Lee County Fire/EMS/Emergency Management	239-337-2000
Sarasota County Public Safety Communications Center	941-861-5988

Radio Traffic Reporting and TV Stations

Metro Networks	Mon – Fri	5:45 a.m. – 12 Midnight	239-275-6911
		Fax	239-275-3149
		Emergency	239-645-6374
WGCU Newsroom	Mon – Fri	5:00 a.m. – 7:00 p.m.	239-590-2521
		Fax	239-590-2520
WGCU Master Control (TV)			239-590-2371

Rental Car Companies

Alamo	800-327-9633
Avis	800-831-2847
Budget	800-527-0700
Dollar	800-800-4000
Enterprise	800-736-8222
Hertz	800-654-3131
National	800-227-7368
Thrifty	800-847-4389

Rental Trucks

Budget	800-283-4382
Penske	800-467-3675
Ryder	800-297-9337
U-Haul	800-468-4285

Sea Tow

Sarasota Area	VHF Channel 11 or	941-756-3422
Tow Boat US	VHF Channel 16 or	800-391-4869
Venice Area	VHF Channel 69 or	941-484-4183
Sea-Land Towing & Recovery		239-432-9002

Service Agencies

American Red Cross	Charlotte County	941-629-4345
	Lee County	239-278-3401
	Manatee County	941-792-8686
American Red Cross	Port Charlotte	941-629-4345
	Sarasota County	941-379-9300
Salvation Army	Bradenton	941-748-1557
	Ft. Myers	239-278-1551
	Naples	239-775-9447
Salvation Army	Port Charlotte	941-629-5950
	Sarasota	941-364-8845
	Tampa/Hillsborough County Area Command	813-226-0055
	Venice	941-484-6227

Radio Amateur Civil Emergency Services (RACES)

(Amateur Radio Operators and Technicians on a network that can provide emergency or back-up communications assistance.)

Collier County – Contact Collier County Emergency Management	239-252-3600
Lee County – Contact Lee County Emergency Management/EOC	239-533-3622
Sarasota County – Contact Sarasota County EOC	M-F 8-5 941-861-5000

Solid Waste

BioMedical Waste Solutions	800-325-9345
Charlotte County Landfill	941-575-6000
Sarasota City	941-365-7651
Sarasota County	941-795-3421
Sewer and Garbage Sarasota City	941-365-7651
Southwest Land Developers (construction and demolition waste only)	941-637-8345
WCA Waste Corporation	941-377-5370

State Watch Office

Haz-Mat Incident	800-320-0519
Rumor Control (Florida Emergency Information Line)	800-342-3557

Street Sweeping

FDOT	Ft. Myers	239-656-7800
FDOT	Sarasota	941-359-7300
Great Bay Power Sweeping	Brandon	813-877-9148
Griffin Parking Area Maintenance	Tampa	813-246-4726

Taxi Companies

Airport Express	239-995-8351
Cape Cab	239-841-0000
Courtesy Transportation	941-954-1970
Diplomat	941-355-5155
	941-365-8294
Emerald Green Cab	941-922-6666
John's Where U Wantta Go	239-997-8294
Lou's Airport Transportation	888-353-1879
	239-936-1923
	239-549-5272
Orange Taxi	239-731-8294
Royal Carriage	941-388-2325
Southern Comfort Taxi Coach	239-822-2793
Voyager Taxi	941-639-2227
	941-629-2810
Yellow Cab	941-955-3341
	239-332-1055

Tires, Truck & Machine Tire Repair

A&E Trucking Service Inc	2665 South St	Ft Myers	239-334-1196
Budd Tire & Truck Repair	6050 Plaza Dr	Ft Myers	239-693-6100
Diesel Repair Specialists	23180 Harper Ave	Charlotte Harbor	941-883-5555
Florida Spring & Axle Service	2335 Rockfill Rd	Ft Myers	239-332-4222
Kenmark Inc	1107 SE 12 th Ct	Cape Coral	239-772-3353
OK Tire			239-334-4151
Pantropic Power Inc	2471 Rockfill Rd	Ft Myers	239-337-4222
Steele Truck Center Inc	2150 Rockfill Rd	Ft Myers	800-741-6225

Toilets (Portable)

Amberjack Sanitation, Placida	877-697-5954
JW Craft Inc.	800-238-3813
North Fort Myers Septic	239-997-0024
Suncoast Portable Sanitation	239-337-7709
T&M Port-O-Let Services Inc	866-770-4271
United Site Services	800-864-5387

Traffic Control Devices and Services (Barricades, Signs, Cones, VMS Trailers)

Bob's Barricades, Traffic and Crowd Control Statewide	800-432-5031
Collier County Traffic Management Center	239-252-5000
FDOT Ft. Myers	239-656-7800
FDOT Sarasota	941-359-7300
Hanna Barricades Service Bradenton	941-761-8546
DBi Services Corp.	239-567-2043
NES Traffic Safety	800-637-7368
Sentry Barricades Lakeland	863-647-3688
Traffic Control Products Ft. Myers	239-334-2525
	Tampa 813-621-8484
Traffic Safety Tampa	813-635-0230
United Rentals Clearwater	727-572-6333

Transportation Agencies

Charlotte County DOT	941-575-3600
Collier County Roadway Maintenance 4800 Davis Blvd, Naples	239-252-8924
Collier County Traffic Management Center	239-252-5000
FDOT Sarasota Operations Center 1840 61 st St, Sarasota	941-359-7300
FDOT Fort Myers Operations Center, 2981 NE Pine Island Rd, Cape Coral	239-656-7800
FDOT Florida's Turnpike Traffic Management Center 24 hrs	407-264-3363
Lee County Traffic Operations 7:00 am – 7:30 pm	239-694-7600
	After Hours 239-337-2000
Manatee County DOT	941-708-7450
	After hours 941-747-3011
Sarasota County Trans Dept.	941-861-5000

Transportation: Facilities and Operations

AMTRAK		800-872-7245
CSX Railroad		800-232-0144
CSX Railroad Manatee/Sarasota		800-356-9582
CXS Transportation Police – (No CSX trains in Sarasota Co.)		800-232-0144
Norfolk and Southern Railroad		800-453-2530
Seminole Gulf Railroad	Dispatch/Emergency Number	239-275-9043
Seminole Gulf Railroad	Corporate Office	239-275-6060
Seminole Gulf Railroad	Passenger Service	239-275-8487

Tree Removal

Acorn Tree Service		239-549-4454
All Coast Tree Service		239-690-1666
Arbor Services		239-433-2411
Armando's Expert Tree & Trimming & Removal		239-910-4514
Barnes Lawn & Tree Service		239-357-5111
Davey Tree Expert Company		239-597-8386
Doupe Tree Services		239-246-0699
Ecosystem Technologies Inc		239-337-5310
Genesis Lawn & Tree Service Inc		239-267-2183
Green Leaf Tree Services		863-993-2568
Gulf Lawn Services Inc		239-939-2070
Horizons Tree Services		239-561-6546
Hurricane Herronen's Tree Services		239-656-4956
		239-368-4201
Island Tree Service Inc		239-463-5121
JD Tree Services		239-454-2476
K E Beal Co		239-458-1188
Lumberjacks Tree Services Inc		239-872-4939
MPLS Tree Service		239-410-1715
Marshall Tree Services		239-415-4080
Randolph Scott Tree Services		941-355-8105
Stump Eliminator		239-694-0851
Sunshine Tree Company		239-770-0437
Timbers Tree Services Inc		239-731-7272
Tim's Tree Service Inc		239-731-3256
		239-994-6384
Tom Gibson Tree Experts		239-693-1107

Trucking Services – Heavy Hauling, Flatbeds and Lowboys

AFA Towing & Recovery			239-463-5606
Affordable Towing			239-458-7500
All Florida Towing			239-936-2958
			239-936-9539
Alligator Towing & Recovery			239-337-5800
Andy's Towing & Recovery			239-768-1221
Colonial Wrecker Service			239-936-4638
Young Trucking		Punta Gorda	941-637-3723

Trucking-Motor Freight, Tractor Trailers

AAA Cooper Transportation	1720 Benchmark Ave	Ft Myers	239-332-5581
A B F U-Pack	4550 Laredo Ave	Ft Myers	800-377-9369
			239-226-9670
Alligator Towing & Recovery	4871 Dr M L King Jr Blvd	Ft Myers	239-337-5800
Benton Express Inc	2715 Rockfill Rd	Ft Myers	239-337-2220
Clary's Site Work & Development	4461 Hancock Bridge Pkwy	Ft Myers	239-997-4004
Con-Way Freight	1870 Benchmark Ave	Ft Myers	239-332-8677
Estes Express Line	3801 Hanson St	Ft Myers	239-332-1054
FedEx Freight	16250 Old US 41	Ft Myers	239-267-0011
Flint & Doyle Inc	3801 Dr. Martin Luther King Jr Blvd	Ft Myers	239-334-2192
Fort Myers Trucking	441 Del Prado Blvd	N Cape Coral	239-458-7424
GulfCoast Transportation Systems Inc	3340 Canal St	Ft Myers	239-275-4488
M&K Trucking			239-872-3930
Robert L Garlick Trucking			239-543-2114
R+L Carriers	5500 4 th Street W	Lehigh Acres	239-332-7710
Roadway Express Inc	1660 Benchmark Ave	Ft Myers	239-479-7775
			239-479-7776
SAIA Motor Freight Line Inc	4507 Cummins Ct	Ft Myers	239-334-3454
Southeastern Freight Lines	9024 High Cotton Ln	Ft Myers	239-332-8686
UPS Freight			239-332-0050
YRC	2635 Rockfill Rd	Ft Myers	239-337-3500

Truck-Trailers, Refrigerated Vans

Florida Trucking Association			850-222-9900
------------------------------	--	--	--------------

Utilities

	Business	Emergency
Amerigas		941-334-2849
Bell South		866-620-6000
Bi-County LP		941-365-0880
Bonita Springs Utilities	239-992-0711	239-992-0711
Cable Location	800-432-4770	
Cape Coral Utilities	239-574-0710	239-574-0851
Detweiler's Propane Gas Service	941-755-2651	
Ferrellgas	239-332-7422	866-708-8209
Fort Myers Water System	239-321-7001	239-321-7608
Florida Power and Light	239-332-9166 800-401-6199	
Greater Pine Island Water Assoc.	239-283-1071	239-283-1071
Horizon Gas	941-423-8303	
Island Water Association	239-472-1502	239-472-1502
Lee County Electrical Cooperative	239-656-2300	239-995-2121
Lee County Utilities	239-693-2992	239-693-2992
Lehigh Utilities	239-368-1615	866-866-4382
Midco Petroleum	941-365-0880	
North Fort Myers Utilities	239-543-1005	239-543-1808
Road Conditions	800-342-3557	
Sarasota County Utilities after hours		941-955-4838
Solid Waste	239-533-8000	
Southwest Florida Water Management District		800-423-1476
Suburban Propane	800-776-7263	
Sunshine State One Call	Underground Facilities Locating Service 811 or	800-432-4770
TECO Gas aka People's Gas		877-832-6747
	Natural Gas Leaks – 24 Hours	877-832-6911
	Fire Dept Use Only	

Walk-In Clinics

First Step	1970 Main St, 5 th Floor	Sarasota	941-366-5333 800-266-6866
Gulf Med Family Medical Center (2 blks S of Kmart) 8-6 everyday	1869 S Tamiami	Venice	941-497-0377
Bee Ridge Family Practice M-F 1-1:30p, 5-6:30p Sat 10-2	4541 Bee Ridge Rd	Sarasota	941-371-9355
Sarasota Family Medical US Healthworks	6813 S Tamiami Tr, 600 N. Cattlemen Rd. #120	Sarasota Sarasota	941-923-5861 941-365-1447
Venice Walk-in Medical Center (near Venice High School) M-Sat 7:30-6p	333 S Tamiami	Venice	941-485-4858

Water Resources

Florida Fish and Game Commission	Emergencies Only	888-404-3922
----------------------------------	------------------	--------------

Weather

National Weather Service 24 Hour – Recorded - Current Weather - Press 6	813-645-2506
National Hurricane Center	305-229-4470
	Duty Forecaster 305-229-4415
	Director 305-229-4402
Sarasota AWOS (Automated Weather Observation System)	941-359-0117
	Ext 1 941-486-2718

Welding and Mobile Repair

Lee Iron Works	Port Charlotte	941-625-9555
----------------	----------------	--------------

Wreckers

See the FHP Troop F Rotation List in Section 2

Light Duty Towing and Road Service (See the FHP maintained list)

AFA Towing			239-463-5606
Affordable Towing			239-458-7500
All Florida Towing	1953 Custom Dr	Ft Myers	239-936-2958 239-936-9539
Alligator Towing & Recovery	4871 Dr M L King Jr Blvd	Ft Myers	239-337-5800
Andy's Towing & Recovery	12741 Metro Pkwy	Ft Myers	239-561-8697
Bald Eagle Towing		Naples	239-403-0000
Colonial Wrecker Service	1968 Custom Dr	Ft Myers	239-936-4638
Excellent Towing Svc	19084 Coconut Rd	Ft Myers	239-489-2300
Gene's Towing	3100 Kennesaw St	Ft Myers	239-628-3848
Heritage Automotive Enterprise	3621 Cleveland Ave	Ft Myers	239-332-4664
Jaime's Towing	160 Hunter Blvd	Ft Myers	239-673-7239
Midtown Collision	3105 Fowler St	Ft Myers	239-939-0550
Prompt Towing	11139 Tamiami Trail	Punta Gorda	941-639-4000
Sea-Land Towing & Recovery	16151 Pine Ridge Rd	Ft Myers	239-432-9002
South Point Towing		Ft Myers	239-482-5562
Tropical Towing	2372 Chandler Ave	Ft Myers	239-693-8691

SECTION 5

Maps with Fire Rescue Jurisdictions on I-75



**Limits
FIRE RESCUE
Response Areas on I-75**

NORTHBOUND

Agency	Limits	Milepost
Ochopee Fire Control & Rescue	Broward Co. Line to Mile 82	50.9 - 82
Golden Gate Fire Control & Rescue	Mile 82 to Golden Gate Parkway Overpass	82 - 104.6
North Naples Fire Control & Rescue	Golden Gate Parkway Overpass to Lee Co. Line	104.6 - 115
Bonita Springs Fire Control & Rescue	Collier Co. Line to Mile 120.5	115 - 120.5
Estero Fire Rescue	Mile 120.5 to 125.5	120.5 - 125.5
San Carlos Park Fire Control & Rescue	Mile 125.5 to Mile 129	125.5 - 129
South Trail Fire Control & Rescue	Mile 129 to SR 884 Colonial Blvd	129 - 136
Fort Myers Fire	SR 884 Colonial Blvd to Lockett Rd	136 - 139
Tice Fire Control & Rescue	Lockett Rd to Caloosahatchee River	139 - 141.4
Bayshore Fire Control & Rescue	Caloosahatchee River to Charlotte Co. Line	141.4 - 148.5
Charlotte County	Lee Co. Line to Sarasota Co. Line	148.5 - 170.5

SOUTHBOUND

Agency	Limits	Milepost
Charlotte County	Sarasota Co. Line to Lee Co. Line	170.5 - 148.5
Bayshore Fire Control & Rescue	Charlotte Co. Line to Caloosahatchee River	148.5 - 141.4
Tice Fire Control & Rescue	Caloosahatchee River to Lockett Rd	141.4 - 139
Fort Myers Fire	Lockett Rd to SR 884 Colonial Blvd	139 - 136
South Trail Fire Control & Rescue	SR 884 Colonial Blvd to Mile 129	136 - 129
San Carlos Park Fire Control & Rescue	Mile 129 to Mile 125.5	129 - 125.5
Estero Fire Rescue	Mile 125.5 to Mile 120.5	125.5 - 120.5
Bonita Springs Fire Control & Rescue	Mile 120.5 to Collier Co. Line	120.5 - 115
North Naples Fire Control & Rescue	Lee Co. Line to Golden Gate Parkway Overpass	115 - 104.6
Golden Gate Fire Control & Rescue	Golden Gate Parkway Overpass to Mile 82	104.6 - 82
Ochopee Fire Control & Rescue	Mile 82 to Broward Co. Line	82 - 50.9

See Section 2 and 3 for agency contacts and Section 4 for additional resources.
Report all Hazmat and petroleum incidents >25 gallons to the State Watch Office: 800-320-0519.

Notifications for I-75 Traffic Incidents in the *Charlotte County* Fire Response Area

Northbound: Lee Co Line to Sarasota Co Line

Mile 148.5 - 170.5

Southbound: Sarasota Co Line to Lee Co Line

Mile 170.5 - 148.5

Traffic Impact Levels

Level 1 - Minor

Incident duration less than 30 minutes; minor lane blockage.

Follow routine incident notifications, including:

SWIFT SunGuide Center	239-225-9860
FHP Troop F Dispatch	239-938-1800 Press 1
Charlotte County Fire Rescue	941-833-5600 or 911
Road Rangers via SWIFT SunGuide Ctr	239-225-9860
I-75 Maintenance (DBI for FDOT)	239-479-7700

Level 2 - Intermediate

Incident duration 30 minutes to 2 hours; multiple lanes blocked but no full closure.

Follow routine incident notifications, including:

SWIFT SunGuide Center	239-225-9860
FHP Troop F Dispatch	239-938-1800 Press 1
Charlotte County Fire Rescue	941-833-5600 or 911
Road Rangers via SWIFT SunGuide Ctr	239-225-9860
I-75 Maintenance (DBI for FDOT)	239-479-7700
Charlotte County DOT	941-575-3638
FDOT PIO	M-F 8-5
	239-461-4300
	After hours
	863-608-3162
Sarasota County DOT	941-650-2108

Level 3 - Major

Incident duration estimated to be more than 2 hours or a full roadway closure in any direction.
Significant area-wide congestion expected.

Follow routine incident notifications, including:

SWIFT SunGuide Center	239-225-9860
FHP Troop F Dispatch	239-938-1800 Press 1
Charlotte County Fire Rescue	941-833-5600 or 911
Road Rangers via SWIFT SunGuide Ctr	239-225-9860
I-75 Maintenance (DBI for FDOT)	239-479-7700
Charlotte County DOT	941-575-3638
FDOT PIO	M-F 8-5
	239-461-4300
	After hours
	863-608-3162
Asset Maintenance (ICA for FDOT)	954-553-4125
Charlotte County EOC	941-833-4000
Sarasota County DOT	941-650-2108
North Port Police	941-429-7300
Lee County Traffic Operations 7 to 5:30	239-694-7600
After Hours (Lee County EOC)	239-477-3600

See Section 2 and 3 for agency contacts and Section 4 for additional resources.
Report all Hazmat and petroleum incidents >25 gallons to the State Watch Office: 800-320-0519.



Notifications for I-75 Traffic Incidents in the *Bayshore* Fire Response Area

Northbound: Caloosahatchee River to Charlotte Co. Line MP 141.4 - 148.5
Southbound: Charlotte Co. Line to Caloosahatchee River MP 148.5 - 141.4

Traffic Impact Levels

Level 1 - Minor

Incident duration less than 30 minutes, minor lane blockage.

Follow routine incident notifications, including:

SWIFT SunGuide Center	239-225-9860
FHP Troop F Dispatch	239-938-1800 Press 1
Bayshore Fire Control & Rescue	239-543-3443 or 911
Road Rangers via SWIFT SunGuide Ctr	239-225-9860
I-75 Maintenance (DBI for FDOT)	239-479-7700

Level 2 - Intermediate

Incident duration 30 minutes to 2 hours, multiple lanes blocked but no full closure.

Follow routine incident notifications, including:

SWIFT SunGuide Center	239-225-9860
FHP Troop F Dispatch	239-938-1800 Press 1
Bayshore Fire Control & Rescue	239-543-3443 or 911
Road Rangers via SWIFT SunGuide Ctr	239-225-9860
I-75 Maintenance (DBI for FDOT)	239-479-7700
FDOT PIO	M-F 8-5
	239-461-4300
	After hours
	863-608-3162
Lee Control	239-337-2000
Lee County DOT	M-F 7 to 5:30
	239-533-9400
	After Hours (Lee County EOC)
	239-533-3622
FDOT PIO	M-F 8-5
	239-461-4300
	After Hours
	863-608-3162
Lee County Sheriff	239-477-1200 or *LCSO(*5276)

Level 3 - Major

Incident duration estimated to be more than 2 hours or a full roadway closure in any direction.
 Significant area-wide congestion expected.

Follow routine incident notifications, including:


SWIFT SunGuide Center	239-225-9860
FHP Troop F Dispatch	239-938-1800 Press 1
Bayshore Fire Control & Rescue	239-543-3443 or 911
Road Rangers via SWIFT SunGuide Ctr	239-225-9860
I-75 Maintenance (DBI for FDOT)	239-479-7700
Lee Control	239-337-2000
Lee County DOT	M-F 7 to 5:30
	239-533-9400
	After Hours (Lee County EOC)
	239-533-3622
FDOT PIO	M-F 8-5
	239-461-4300
	After Hours
	863-608-3162
Lee County Sheriff	239-477-1200 or *LCSO(*5276)
Asset Maintenance (ICA for FDOT)	954-553-4125

See Section 2 and 3 for agency contacts and Section 4 for additional resources.
 Report all Hazmat and petroleum incidents >25 gallons to the State Watch Office: 800-320-0519.

C H A R L O T T E




LEGEND

 Bayshore Fire Control and Rescue Response Area



Bayshore Fire Control and Rescue Response Area
Lee County
Collier-Lee-Charlotte
Traffic Incident Management Team



0 1 2 3 4 Miles

Revised June 2011

Notifications for I-75 Traffic Incidents in the *Tice* Fire Control and Rescue
Response Area

Northbound: Lockett Rd to Caloosahatchee River

MP 139-141.4

Southbound: Caloosahatchee River to Lockett Rd

MP 141.4-139

Traffic Impact Levels

Level 1 - Minor

Incident duration less than 30 minutes, minor lane blockage.

Follow routine incident notifications, including:

SWIFT SunGuide Center	239-225-9860
FHP Troop F Dispatch	239-938-1800 Press 1
Tice Fire Control & Rescue	239-694-2380 or 911
Road Rangers via SWIFT SunGuide Ctr	239-225-9860
I-75 Maintenance (DBI for FDOT)	239-479-7700

Level 2 - Intermediate

Incident duration 30 minutes to 2 hours, multiple lanes blocked but no full closure.

Follow routine incident notifications, including:

SWIFT SunGuide Center	239-225-9860
FHP Troop F Dispatch	239-938-1800 Press 1
Tice Fire Control & Rescue	239-694-2380 or 911
Road Rangers via SWIFT SunGuide Ctr	239-225-9860
I-75 Maintenance (DBI for FDOT)	239-479-7700
FDOT PIO	M-F 8-5
	239-461-4300
	After hours
	863-608-3162
Lee Control	239-337-2000
Lee County DOT	M-F 7 to 5:30
	239-533-9400
	After Hours (Lee County EOC)
	239-533-3622
FDOT PIO	M-F 8-5
	239-461-4300
	After Hours
	863-608-3162
Lee County Sheriff	239-477-1200 or *LCSO(*5276)

Level 3 - Major

Incident duration estimated to be more than 2 hours or a full roadway closure in any direction.
Significant area-wide congestion expected.

Follow routine incident notifications, including:

SWIFT SunGuide Center	239-225-9860
FHP Troop F Dispatch	239-938-1800 Press 1
Tice Fire Control & Rescue	239-694-2380 or 911
Road Rangers via SWIFT SunGuide Ctr	239-225-9860
I-75 Maintenance (DBI for FDOT)	239-479-7700
Lee Control	239-337-2000
Lee County DOT	M-F 7 to 5:30
	239-533-9400
	After Hours (Lee County EOC)
	239-533-3622
FDOT PIO	M-F 8-5
	239-461-4300
	After Hours
	863-608-3162
Lee County Sheriff	239-477-1200 or *LCSO(*5276)
Asset Maintenance (ICA for FDOT)	954-553-4125

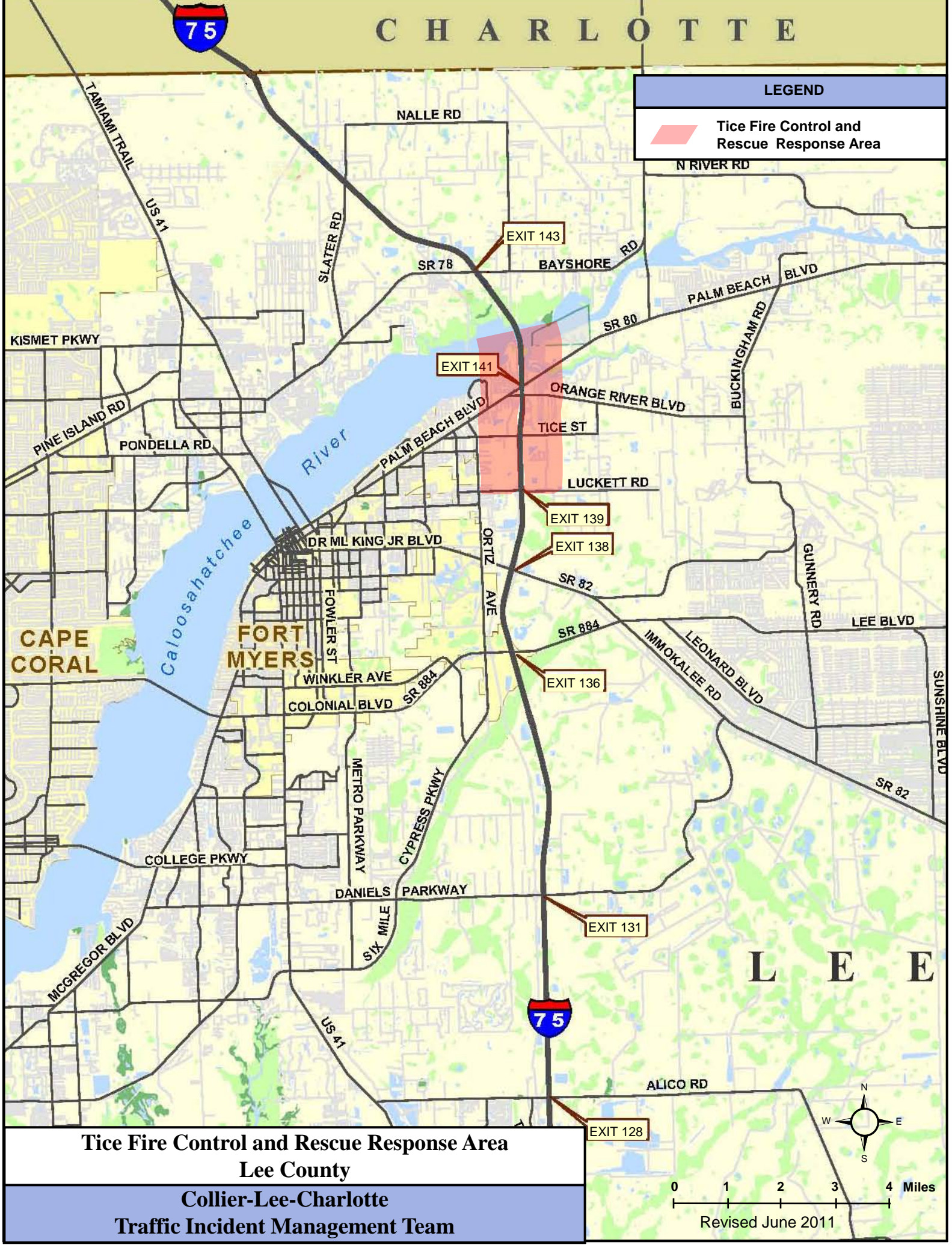
See Section 2 and 3 for agency contacts and Section 4 for additional resources.
Report all Hazmat and petroleum incidents >25 gallons to the State Watch Office: 800-320-0519.

C H A R L O T T E



LEGEND

 Tice Fire Control and Rescue Response Area



**Tice Fire Control and Rescue Response Area
Lee County**

**Collier-Lee-Charlotte
Traffic Incident Management Team**



Revised June 2011

Notifications for I-75 Traffic Incidents in the *Fort Myers* Fire
Response Area

Northbound: SR884/Colonial Blvd to Lucket Rd
Southbound: Lucket Rd to SR884/Colonial Blvd

MP 136 - 139
MP 139 - 136

Traffic Impact Levels

Level 1 - Minor

Incident duration less than 30 minutes, minor lane blockage.

Follow routine incident notifications, including:

SWIFT SunGuide Center	239-225-9860
FHP Troop F Dispatch	239-938-1800 Press 1
Fort Myers Fire Rescue	239-321-7311 or 911
Road Rangers via SWIFT SunGuide Ctr	239-225-9860
I-75 Maintenance (DBI for FDOT)	239-479-7700

Level 2 - Intermediate

Incident duration 30 minutes to 2 hours, multiple lanes blocked but no full closure.

Follow routine incident notifications, including:

SWIFT SunGuide Center	239-225-9860
FHP Troop F Dispatch	239-938-1800 Press 1
Fort Myers Fire Rescue	239-334-6222 or 911
Road Rangers via SWIFT SunGuide Ctr	239-225-9860
I-75 Maintenance (DBI for FDOT)	239-479-7700
FDOT PIO	M-F 8-5
	239-461-4300
	After hours
	863-608-3162
Lee Control	239-337-2000
Lee County DOT	M-F 7 to 5:30
	239-533-9400
	After Hours (Lee County EOC)
	239-533-3622
FDOT PIO	M-F 8-5
	239-461-4300
	After Hours
	863-608-3162
Lee County Sheriff	239-477-1200 or *LC SO(*5276)

Level 3 - Major

Incident duration estimated to be more than 2 hours or a full roadway closure in any direction.
Significant area-wide congestion expected.

Follow routine incident notifications, including:


SWIFT SunGuide Center	239-225-9860
FHP Troop F Dispatch	239-938-1800 Press 1
Fort Myers Fire Rescue	239-334-6222 or 911
Road Rangers via SWIFT SunGuide Ctr	239-225-9860
I-75 Maintenance (DBI for FDOT)	239-479-7700
Lee Control	239-337-2000
Lee County DOT	M-F 7 to 5:30
	239-533-9400
	After Hours (Lee County EOC)
	239-533-3622
FDOT PIO	M-F 8-5
	239-461-4300
	After Hours
	863-608-3162
Lee County Sheriff	239-477-1200 or *LC SO(*5276)
Asset Maintenance (ICA for FDOT)	954-553-4125

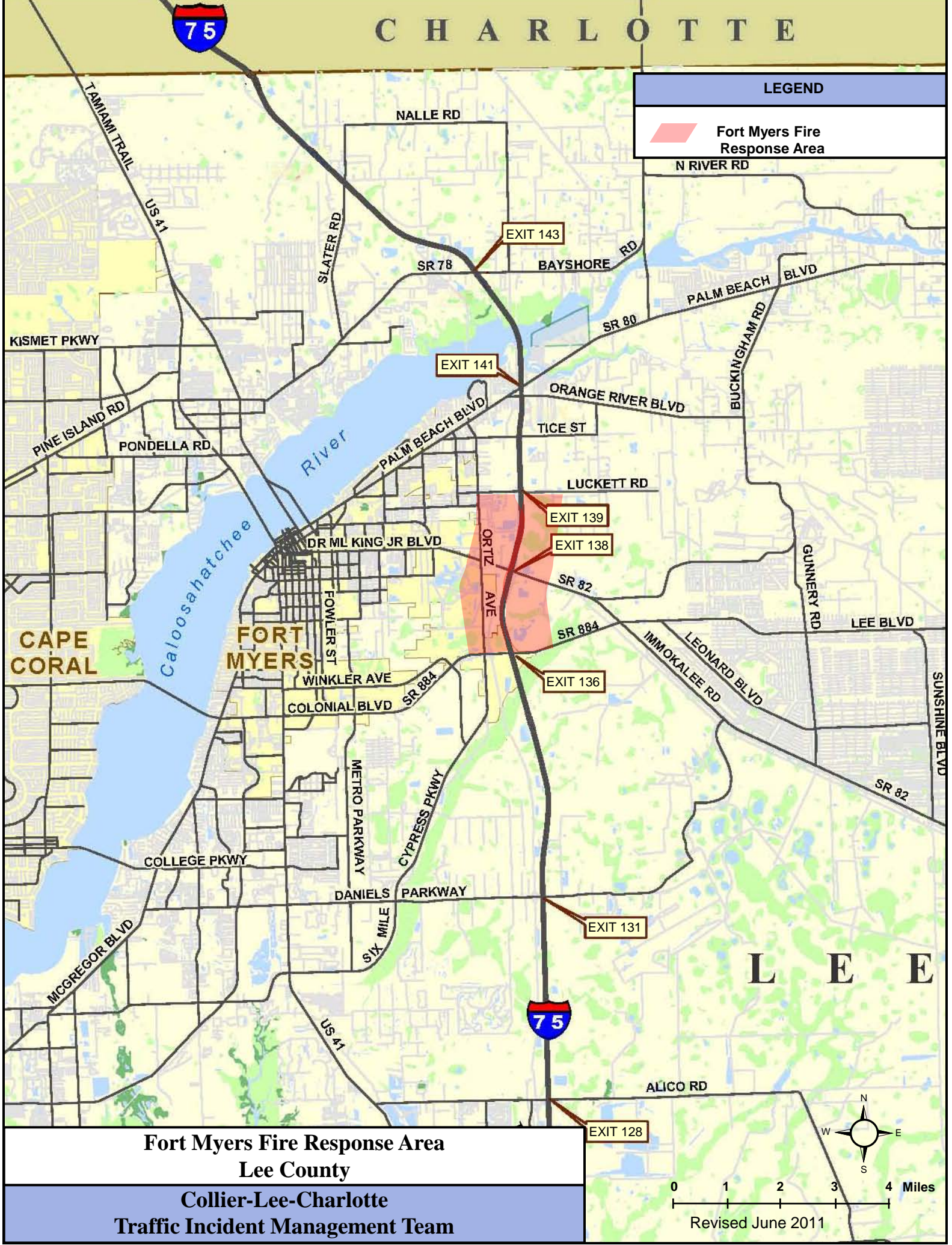
See Section 2 and 3 for agency contacts and Section 4 for additional resources.
Report all Hazmat and petroleum incidents >25 gallons to the State Watch Office: 800-320-0519.

C H A R L O T T E



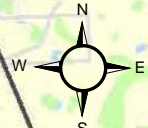
LEGEND

 Fort Myers Fire Response Area



**Fort Myers Fire Response Area
Lee County**

**Collier-Lee-Charlotte
Traffic Incident Management Team**



Revised June 2011

Notifications for I-75 Traffic Incidents in the *South Trail* Fire Control and Rescue
Response Area

Northbound: Milepost 129 to SR884/Colonial Blvd
Southbound: SR884/Colonial Blvd to Milepost 129

MP 129 - 136
MP 136 - 129

Traffic Impact Levels

Level 1 - Minor

Incident duration less than 30 minutes, minor lane blockage.

Follow routine incident notifications, including:

SWIFT SunGuide Center	239-225-9860
FHP Troop F Dispatch	239-938-1800 Press 1
South Trail Fire	239-433-0080 or 911
Road Rangers via SWIFT SunGuide Ctr	239-225-9860
I-75 Maintenance (DBI for FDOT)	239-479-7700

Level 2 - Intermediate

Incident duration 30 minutes to 2 hours, multiple lanes blocked but no full closure.

Follow routine incident notifications, including:

SWIFT SunGuide Center	239-225-9860
FHP Troop F Dispatch	239-938-1800 Press 1
South Trail Fire	239-433-0080 or 911
Road Rangers via SWIFT SunGuide Ctr	239-225-9860
I-75 Maintenance (DBI for FDOT)	239-479-7700
FDOT PIO	M-F 8-5
	239-461-4300
	After hours
	863-608-3162
Lee Control	239-337-2000
Lee County DOT	M-F 7 to 5:30
	239-533-9400
	After Hours (Lee County EOC)
	239-533-3622
FDOT PIO	M-F 8-5
	239-461-4300
	After Hours
	863-608-3162
Lee County Sheriff	239-477-1200 or *LCSO(*5276)

Level 3 - Major

Incident duration estimated to be more than 2 hours or a full roadway closure in any direction.
Significant area-wide congestion expected.

Follow routine incident notifications, including:

SWIFT SunGuide Center	239-225-9860
FHP Troop F Dispatch	239-938-1800 Press 1
South Trail Fire	239-433-0080 or 911
Road Rangers via SWIFT SunGuide Ctr	239-225-9860
I-75 Maintenance (DBI for FDOT)	239-479-7700
Lee Control	239-337-2000
Lee County DOT	M-F 7 to 5:30
	239-533-9400
	After Hours (Lee County EOC)
	239-533-3622
FDOT PIO	M-F 8-5
	239-461-4300
	After Hours
	863-608-3162
Lee County Sheriff	239-477-1200 or *LCSO(*5276)
Asset Maintenance (ICA for FDOT)	954-553-4125

See Section 2 and 3 for agency contacts and Section 4 for additional resources.
Report all Hazmat and petroleum incidents >25 gallons to the State Watch Office: 800-320-0519.

C H A R L O T T E



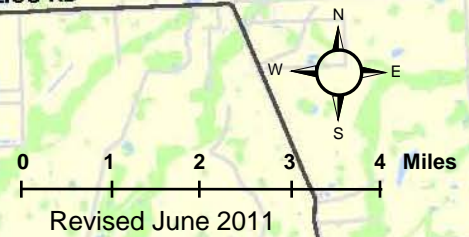
LEGEND

 South Trail Fire Control and Rescue Response Area



**South Trail Fire Control and Rescue Response Area
Lee County**

**Collier-Lee-Charlotte
Traffic Incident Management Team**



Notifications for I-75 Traffic Incidents in the *San Carlos Park* Fire Control and
Rescue Response Area

Northbound: Milepost 125.5 to Milepost 129
Southbound: Milepost 129 to Milepost 125.5

MP 125.5 - 129
MP 129 - 125.5

Traffic Impact Levels

Level 1 - Minor

Incident duration less than 30 minutes, minor lane blockage.

Follow routine incident notifications, including:

SWIFT SunGuide Center	239-225-9860
FHP Troop F Dispatch	239-938-1800 Press 1
San Carlos Park Fire	239-267-7525 or 911
Road Rangers via SWIFT SunGuide Ctr	239-225-9860
I-75 Maintenance (DBI for FDOT)	239-479-7700

Level 2 - Intermediate

Incident duration 30 minutes to 2 hours, multiple lanes blocked but no full closure.

Follow routine incident notifications, including:

SWIFT SunGuide Center	239-225-9860
FHP Troop F Dispatch	239-938-1800 Press 1
San Carlos Park Fire	239-267-7525 or 911
Road Rangers via SWIFT SunGuide Ctr	239-225-9860
I-75 Maintenance (DBI for FDOT)	239-479-7700
FDOT PIO	M-F 8-5
	239-461-4300
	After hours
	863-608-3162
Lee Control	239-337-2000
Lee County DOT	M-F 7 to 5:30
	239-533-9400
	After Hours (Lee County EOC)
	239-533-3622
FDOT PIO	M-F 8-5
	239-461-4300
	After Hours
	863-608-3162
Lee County Sheriff	239-477-1200 or *LCSO(*5276)

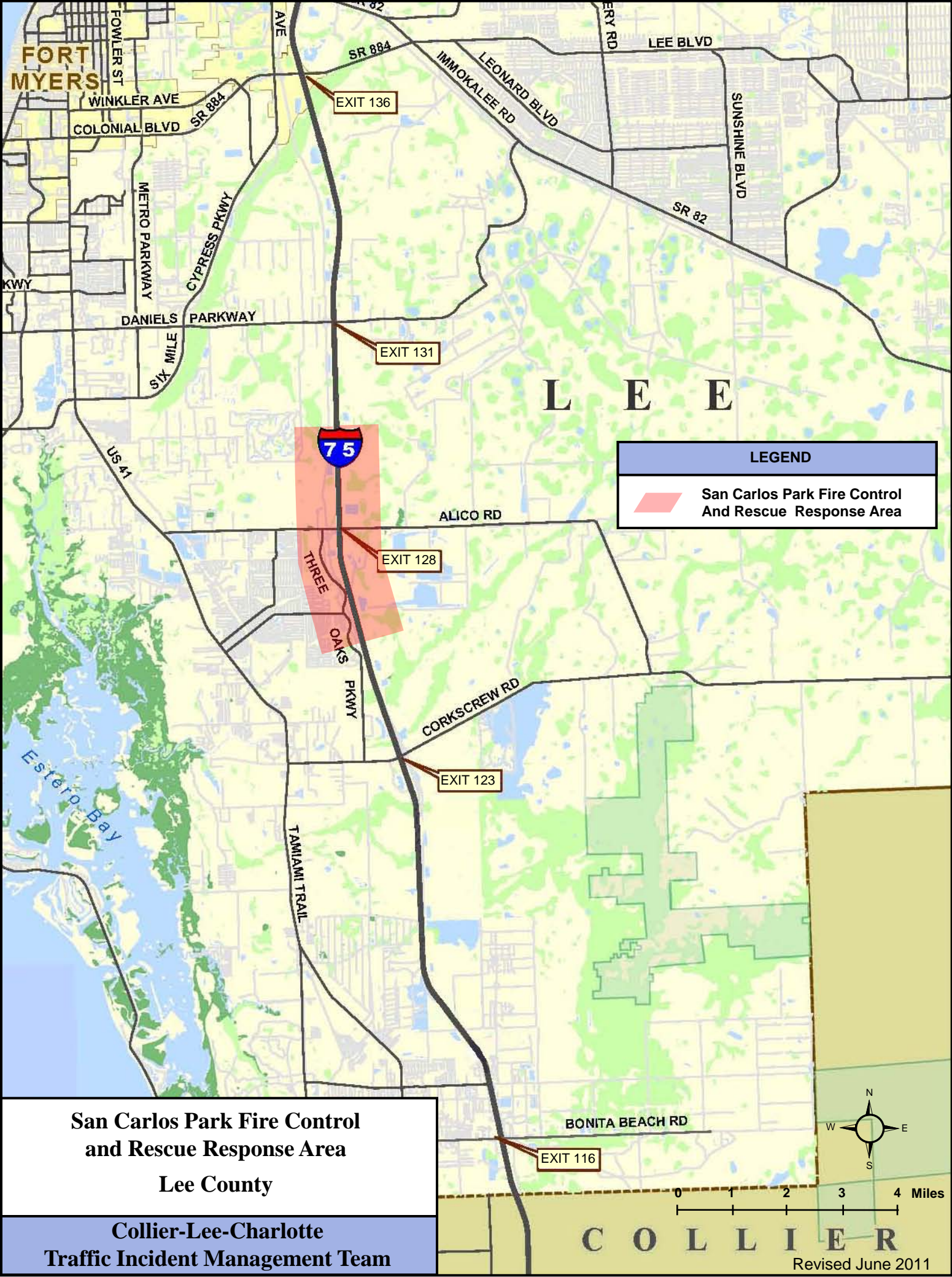
Level 3 - Major

Incident duration estimated to be more than 2 hours or a full roadway closure in any direction.
Significant area-wide congestion expected.

Follow routine incident notifications, including:

SWIFT SunGuide Center	239-225-9860
FHP Troop F Dispatch	239-938-1800 Press 1
San Carlos Park Fire	239-267-7525 or 911
Road Rangers via SWIFT SunGuide Ctr	239-225-9860
I-75 Maintenance (DBI for FDOT)	239-479-7700
Lee Control	239-337-2000
Lee County DOT	M-F 7 to 5:30
	239-533-9400
	After Hours (Lee County EOC)
	239-533-3622
FDOT PIO	M-F 8-5
	239-461-4300
	After Hours
	863-608-3162
Lee County Sheriff	239-477-1200 or *LCSO(*5276)
Asset Maintenance (ICA for FDOT)	954-553-4125

See Section 2 and 3 for agency contacts and Section 4 for additional resources.
Report all Hazmat and petroleum incidents >25 gallons to the State Watch Office: 800-320-0519.

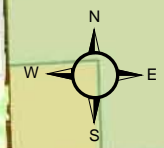


LEGEND

 San Carlos Park Fire Control And Rescue Response Area

San Carlos Park Fire Control and Rescue Response Area
Lee County

Collier-Lee-Charlotte Traffic Incident Management Team



COLLIER

Revised June 2011

Notifications for I-75 Traffic Incidents in the *Estero* Fire Rescue Response Area**Northbound: Milepost 120.5 to Milepost 125.5****MP 120.5 - 125.5****Southbound: Milepost 125.5 to Milepost 120.5****MP 125.5 - 120.5***Traffic Impact Levels***Level 1 - Minor**

Incident duration less than 30 minutes, minor lane blockage.

Follow routine incident notifications, including:

SWIFT SunGuide Center	239-225-9860
FHP Troop F Dispatch	239-938-1800 Press 1
Estero Fire Rescue	239-390-8000 or 911
Road Rangers via SWIFT SunGuide Ctr	239-225-9860
I-75 Maintenance (DBI for FDOT)	239-479-7700

Level 2 - Intermediate

Incident duration 30 minutes to 2 hours, multiple lanes blocked but no full closure.

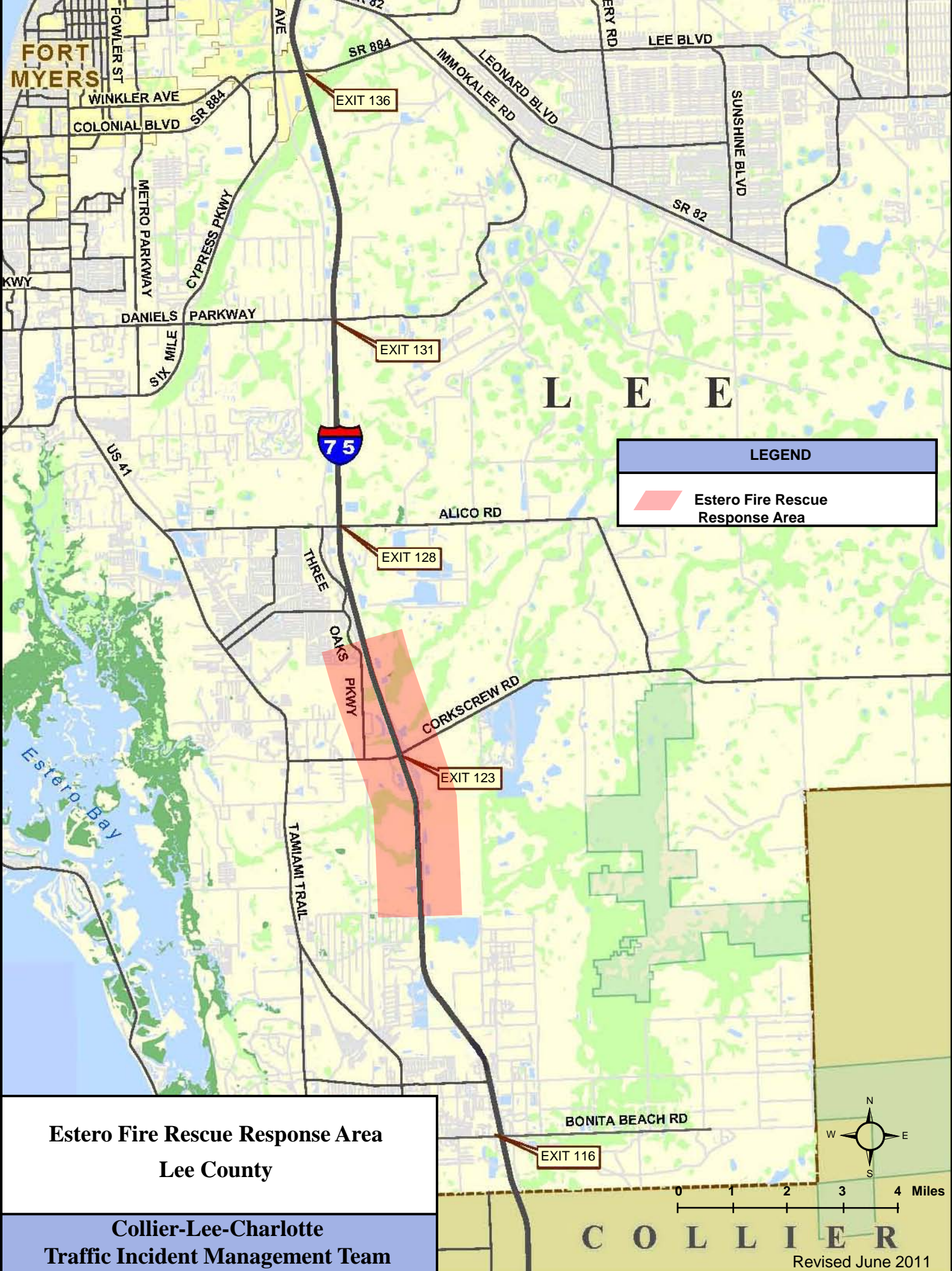
Follow routine incident notifications, including:

SWIFT SunGuide Center	239-225-9860
FHP Troop F Dispatch	239-938-1800 Press 1
Estero Fire Rescue	239-390-8000 or 911
Road Rangers via SWIFT SunGuide Ctr	239-225-9860
I-75 Maintenance (DBI for FDOT)	239-479-7700
FDOT PIO	M-F 8-5
	239-461-4300
	After hours
	863-608-3162
Lee Control	239-337-2000
Lee County DOT	M-F 7 to 5:30
	239-533-9400
	After Hours (Lee County EOC)
	239-533-3622
FDOT PIO	M-F 8-5
	239-461-4300
	After Hours
	863-608-3162
Lee County Sheriff	239-477-1200 or *LCISO(*5276)


Level 3 - MajorIncident duration estimated to be more than 2 hours or a full roadway closure in any direction.
Significant area-wide congestion expected.**Follow routine incident notifications, including:**

SWIFT SunGuide Center	239-225-9860
FHP Troop F Dispatch	239-938-1800 Press 1
Estero Fire Rescue	239-390-8000 or 911
Road Rangers via SWIFT SunGuide Ctr	239-225-9860
I-75 Maintenance (DBI for FDOT)	239-479-7700
Lee Control	239-337-2000
Lee County DOT	M-F 7 to 5:30
	239-533-9400
	After Hours (Lee County EOC)
	239-533-3622
FDOT PIO	M-F 8-5
	239-461-4300
	After Hours
	863-608-3162
Lee County Sheriff	239-477-1200 or *LCISO(*5276)
Asset Maintenance (ICA for FDOT)	954-553-4125

See Section 2 and 3 for agency contacts and Section 4 for additional resources.
Report all Hazmat and petroleum incidents >25 gallons to the State Watch Office: 800-320-0519.

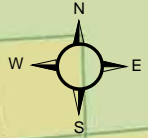


LEGEND

 Estero Fire Rescue Response Area

Estero Fire Rescue Response Area
Lee County

Collier-Lee-Charlotte
Traffic Incident Management Team



C O L L I E R

Revised June 2011

Notifications for I-75 Traffic Incidents in the *Bonita Springs* Fire Control and Rescue Response Area

Northbound: Collier Co Line to Milepost 120.5
Southbound: Milepost 120.5 to Collier Co Line

MP 115 - 120.5
MP 120.5 - 115

Traffic Impact Levels

Level 1 - Minor

Incident duration less than 30 minutes, minor lane blockage.

Follow routine incident notifications, including:

SWIFT SunGuide Center	239-225-9860
FHP Troop F Dispatch	239-938-1800 Press 1
Bonita Springs Fire	239-949-6200 or 911
Road Rangers via SWIFT SunGuide Ctr	239-225-9860
I-75 Maintenance (DBI for FDOT)	239-479-7700

Level 2 - Intermediate

Incident duration 30 minutes to 2 hours, multiple lanes blocked but no full closure.

Follow routine incident notifications, including:

SWIFT SunGuide Center	239-225-9860
FHP Troop F Dispatch	239-938-1800 Press 1
Bonita Springs Fire	239-949-6200 or 911
Road Rangers via SWIFT SunGuide Ctr	239-225-9860
I-75 Maintenance (DBI for FDOT)	239-479-7700
FDOT PIO	M-F 8-5
	239-461-4300
	After hours
	863-608-3162
Lee Control	239-337-2000
Lee County DOT	M-F 7 to 5:30
	239-533-9400
	After Hours (Lee County EOC)
	239-533-3622
FDOT PIO	M-F 8-5
	239-461-4300
	After Hours
	863-608-3162
Lee County Sheriff	239-477-1200 or *LC SO(*5276)

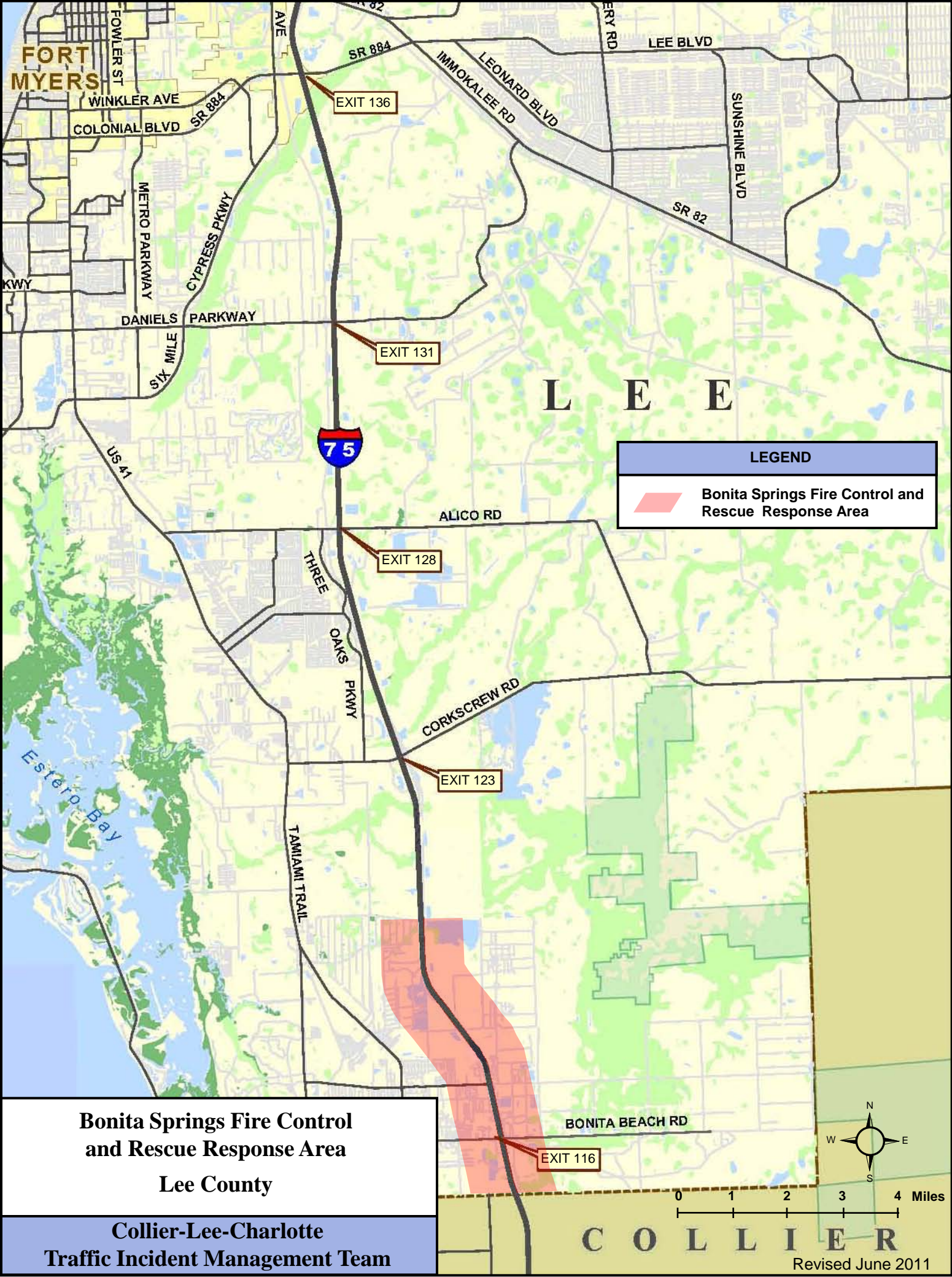
Level 3 - Major

Incident duration estimated to be more than 2 hours or a full roadway closure in any direction.
 Significant area-wide congestion expected.

Follow routine incident notifications, including:

SWIFT SunGuide Center	239-225-9860
FHP Troop F Dispatch	239-938-1800 Press 1
Bonita Springs Fire	239-949-6200 or 911
Road Rangers via SWIFT SunGuide Ctr	239-225-9860
I-75 Maintenance (DBI for FDOT)	239-479-7700
Lee Control	239-337-2000
Lee County DOT	M-F 7 to 5:30
	239-313-3714
	After Hours (Lee County EOC)
	239-533-3622
FDOT PIO	M-F 8-5
	239-461-4300
	After Hours
	863-608-3162
Lee County Sheriff	239-477-1200 or *LC SO(*5276)
Asset Maintenance (ICA for FDOT)	954-553-4125

See Section 2 and 3 for agency contacts and Section 4 for additional resources.
 Report all Hazmat and petroleum incidents >25 gallons to the State Watch Office: 800-320-0519.



FORT MYERS

L E E

LEGEND

 **Bonita Springs Fire Control and Rescue Response Area**

Bonita Springs Fire Control and Rescue Response Area
Lee County

Collier-Lee-Charlotte Traffic Incident Management Team

BONITA BEACH RD

EXIT 116

0 1 2 3 4 Miles

C O L L I E R

Revised June 2011

Notifications for I-75 Traffic Incidents in the *North Naples* Fire Control and Rescue Response Area

Northbound: Golden Gate Pkwy Overpass to Lee Co Line MP 104.6 - 115
Southbound: Lee Co Line to Golden Gate Pkwy Overpass MP 115 - 104.6

Traffic Impact Levels

Level 1 - Minor

Incident duration less than 30 minutes, minor lane blockage.

Follow routine incident notifications, including:

SWIFT SunGuide Center	239-225-9860
FHP Troop F Dispatch	239-938-1800 Press 1
North Naples Fire	239-597-3222 or 911
Road Rangers via SWIFT SunGuide Ctr	239-225-9860
I-75 Maintenance (DBI for FDOT)	239-479-7700

Level 2 - Intermediate

Incident duration 30 minutes to 2 hours, multiple lanes blocked but no full closure.

Follow routine incident notifications, including:

SWIFT SunGuide Center	239-225-9860
FHP Troop F Dispatch	239-938-1800 Press 1
North Naples Fire	239-597-3222 or 911
Road Rangers via SWIFT SunGuide Ctr	239-225-9860
I-75 Maintenance (DBI for FDOT)	239-479-7700
FDOT PIO	M-F 8-5
	After hours
	863-608-3162
West Gate Toll Plaza	239-455-1334
East Gate Toll Plaza	954-389-0156
Collier County Sheriff	239-793-9300 or *CCSO(*2276)

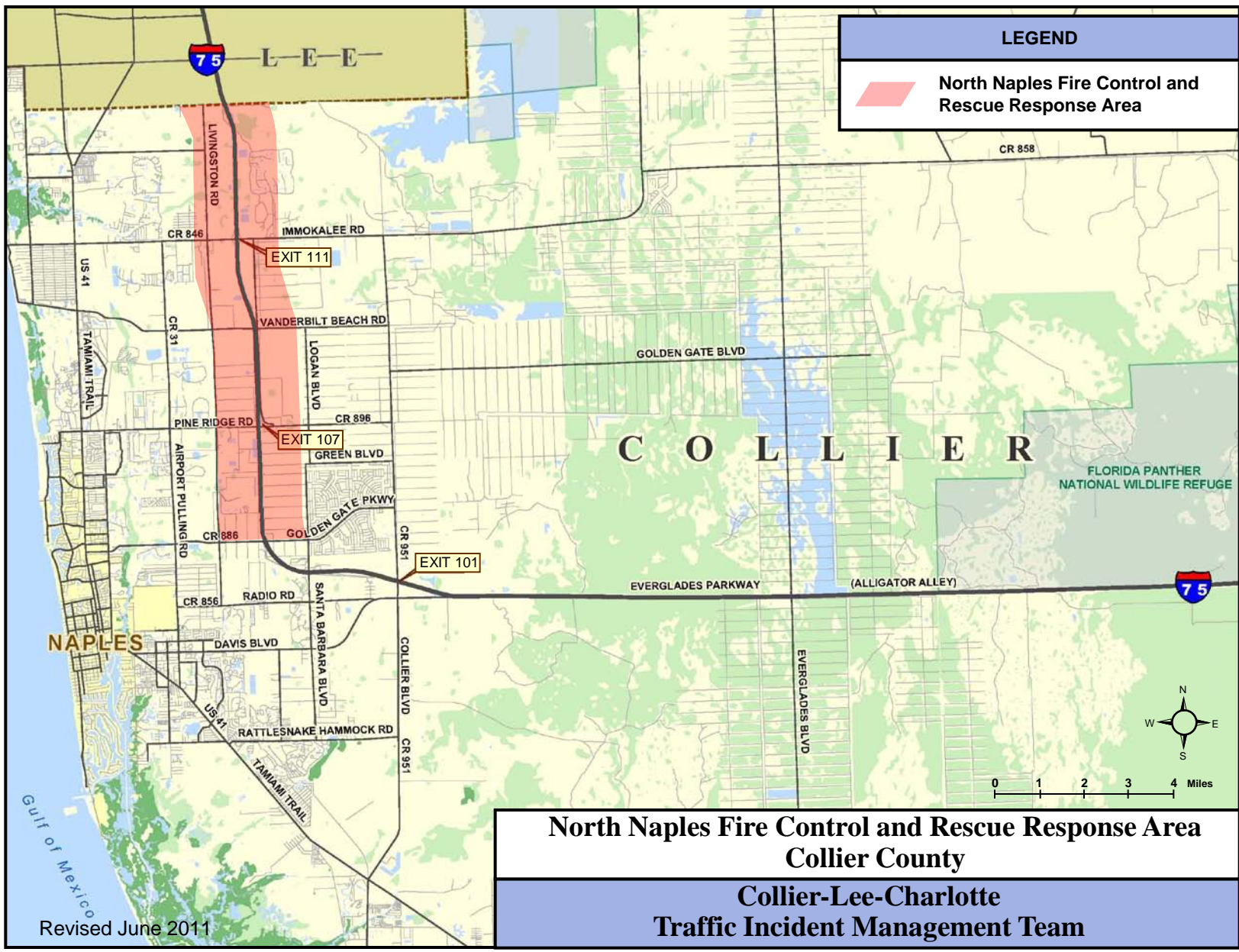
Level 3 - Major

Incident duration estimated to be more than 2 hours or a full roadway closure in any direction.
 Significant area-wide congestion expected.

Follow routine incident notifications, including:

SWIFT SunGuide Center	239-225-9860
FHP Troop F Dispatch	239-938-1800 Press 1
North Naples Fire	239-597-3222 or 911
Road Rangers via SWIFT SunGuide Ctr	239-225-9860
I-75 Maintenance (DBI for FDOT)	239-479-7700
FDOT PIO	M-F 8-5
	After hours
	863-608-3162
West Gate Toll Plaza	239-455-1334
East Gate Toll Plaza	954-389-0156
Collier County Sheriff	239-252-9300 or *CCSO(*2276)
Asset Maintenance (ICA for FDOT)	954-553-4125

See Section 2 and 3 for agency contacts and Section 4 for additional resources.
 Report all Hazmat and petroleum incidents >25 gallons to the State Watch Office: 800-320-0519.



LEGEND

North Naples Fire Control and Rescue Response Area

**North Naples Fire Control and Rescue Response Area
Collier County
Collier-Lee-Charlotte
Traffic Incident Management Team**

Revised June 2011

Notifications for I-75 Traffic Incidents in the *Golden Gate* Fire Control and Rescue
Response Area

Northbound: Mile 82 to Golden Gate Pkwy Overpass
Southbound: Golden Gate Pkwy Overpass to Mile 82

MP 82 - 104.6
MP 104.6 - 82

Traffic Impact Levels

Level 1 - Minor

Incident duration less than 30 minutes, minor lane blockage.

Follow routine incident notifications, including:

SWIFT SunGuide Center	239-225-9860
FHP Troop F Dispatch	239-938-1800 Press 1
Golden Gate Fire	239-207-4421 or 911
Road Rangers via SWIFT SunGuide Ctr	239-225-9860
I-75 Maintenance (DBI for FDOT)	239-479-7700

Level 2 - Intermediate

Incident duration 30 minutes to 2 hours, multiple lanes blocked but no full closure.

Follow routine incident notifications, including:

SWIFT SunGuide Center	239-225-9860
FHP Troop F Dispatch	239-938-1800 Press 1
Golden Gate Fire	239-207-4421 or 911
Road Rangers via SWIFT SunGuide Ctr	239-225-9860
I-75 Maintenance (DBI for FDOT)	239-479-7700
FDOT PIO	M-F 8-5
	After hours
	863-608-3162
West Gate Toll Plaza	239-455-1334
East Gate Toll Plaza	954-389-0156
Collier County Sheriff	239-793-9300 or *CCSO(*2276)

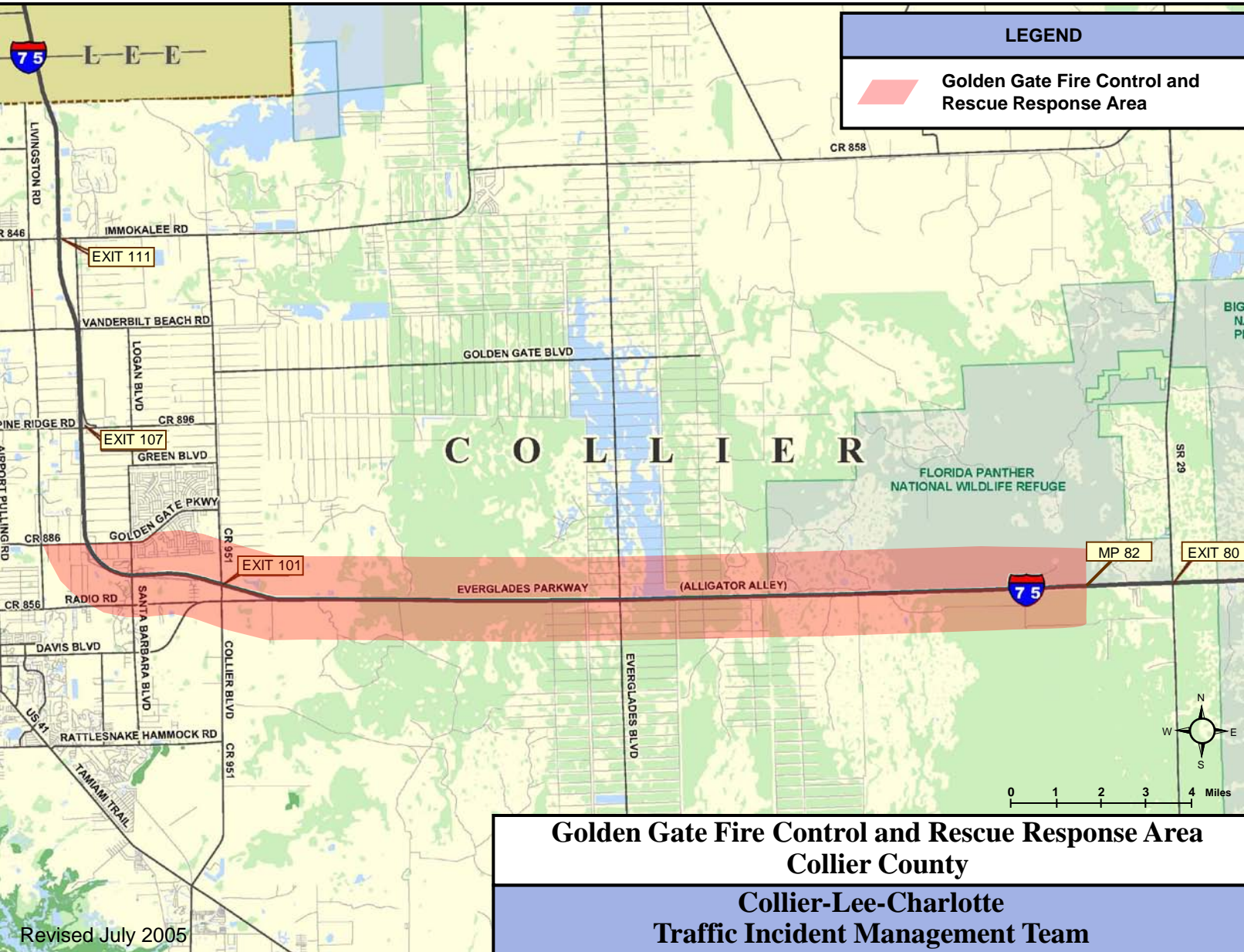
Level 3 - Major

Incident duration estimated to be more than 2 hours or a full roadway closure in any direction.
Significant area-wide congestion expected.

Follow routine incident notifications, including:

SWIFT SunGuide Center	239-225-9860
FHP Troop F Dispatch	239-938-1800 Press 1
Golden Gate Fire	239-207-4421 or 911
Road Rangers via SWIFT SunGuide Ctr	239-225-9860
I-75 Maintenance (DBI for FDOT)	239-479-7700
FDOT PIO	M-F 8-5
	After hours
	863-608-3162
Broward TMC	954-847-2775
West Gate Toll Plaza	239-455-1334
East Gate Toll Plaza	954-389-0156
Collier County Sheriff	239-252-9300 or *CCSO(*2276)
Asset Maintenance (ICA for FDOT)	954-553-4125

See Section 2 and 3 for agency contacts and Section 4 for additional resources.
Report all Hazmat and petroleum incidents >25 gallons to the State Watch Office: 800-320-0519.



Notifications for I-75 Traffic Incidents in the *Ochopee* Fire Control and Rescue
Response Area

Northbound/Westbound: Broward Co Line to Mile 82
Southbound/Eastbound: Mile 82 to Broward Co Line

MP 50.9 - 82
MP 82 - 50.9

Traffic Impact Levels

Level 1 - Minor

Incident duration less than 30 minutes, minor lane blockage.

Follow routine incident notifications, including:

SWIFT SunGuide Center	239-225-9860
FHP Troop F Dispatch	239-938-1800 Press 1
Ochopee Fire	239-695-4114 or 911
Road Rangers via SWIFT SunGuide Ctr	239-225-9860
I-75 Maintenance (DBI for FDOT)	239-479-7700
Miccosukee Police	305-223-1600

Level 2 - Intermediate

Incident duration 30 minutes to 2 hours, multiple lanes blocked but no full closure.

Follow routine incident notifications, including:

SWIFT SunGuide Center	239-225-9860
FHP Troop F Dispatch	239-938-1800 Press 1
Ochopee Fire	239-695-4114 or 911
Road Rangers via SWIFT SunGuide Ctr	239-225-9860
I-75 Maintenance (DBI for FDOT)	239-479-7700
Miccosukee Police	305-223-1600
FDOT PIO	M-F 8-5
	After hours
	239-461-4300
	863-608-3162
West Gate Toll Plaza	239-455-1334
East Gate Toll Plaza	954-389-0156
Collier County Sheriff	239-793-9300 or *CCSO(*2276)

Level 3 - Major

Incident duration estimated to be more than 2 hours or a full roadway closure in any direction.
Significant area-wide congestion expected.

Follow routine incident notifications, including:

SWIFT SunGuide Center	239-225-9860
FHP Troop F Dispatch	239-938-1800 Press 1
Ochopee Fire	239-695-4114 or 911
Road Rangers via SWIFT SunGuide Ctr	239-225-9860
I-75 Maintenance (DBI for FDOT)	239-479-7700
Miccosukee Police	305-223-1600
FDOT PIO	M-F 8-5
	After hours
	239-461-4300
	863-608-3162
Broward TMC	954-847-2775
West Gate Toll Plaza	239-455-1334
East Gate Toll Plaza	954-389-0156
Collier County Sheriff	239-252-9300 or *CCSO(*2276)
Asset Maintenance (ICA for FDOT)	954-553-4125

See Section 2 and 3 for agency contacts and Section 4 for additional resources.

Report all Hazmat and petroleum incidents >25 gallons to the State Watch Office: 800-320-0519.

